

Implantation Plan

Gross Construction Area	269.29 m ²
Basement	167 m ²
Ground Floor	170.93 m ²
First Floor	98.29 m ²
Pool	40 m ²
Plot	770 m ²

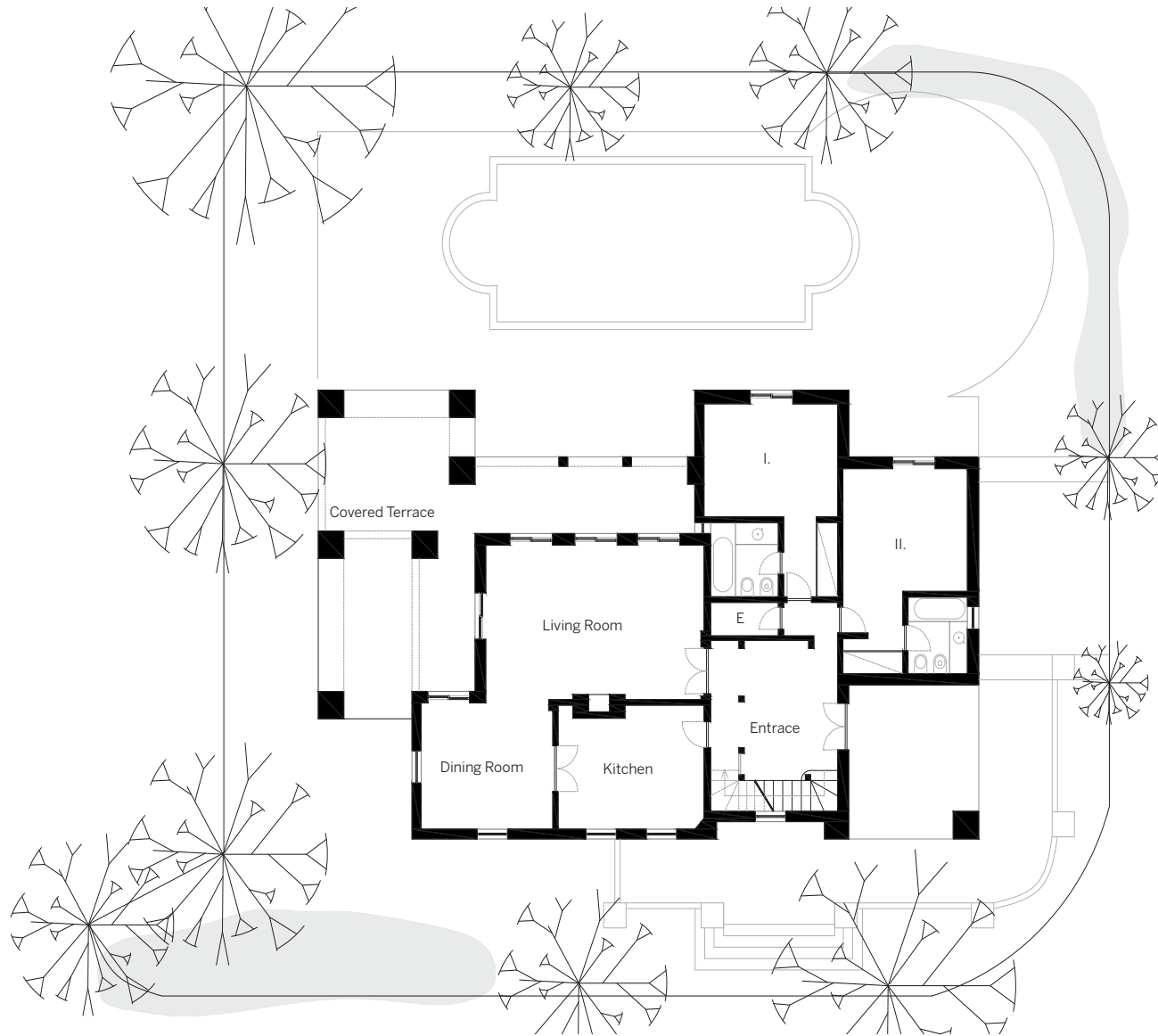




Lower Level

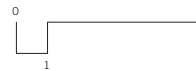
Garage	34.10 m ²
Storage	5.71 m ²
TV Room	39.44 m ²
Office	12.34 m ²
Laundry Room	10.86 m ²

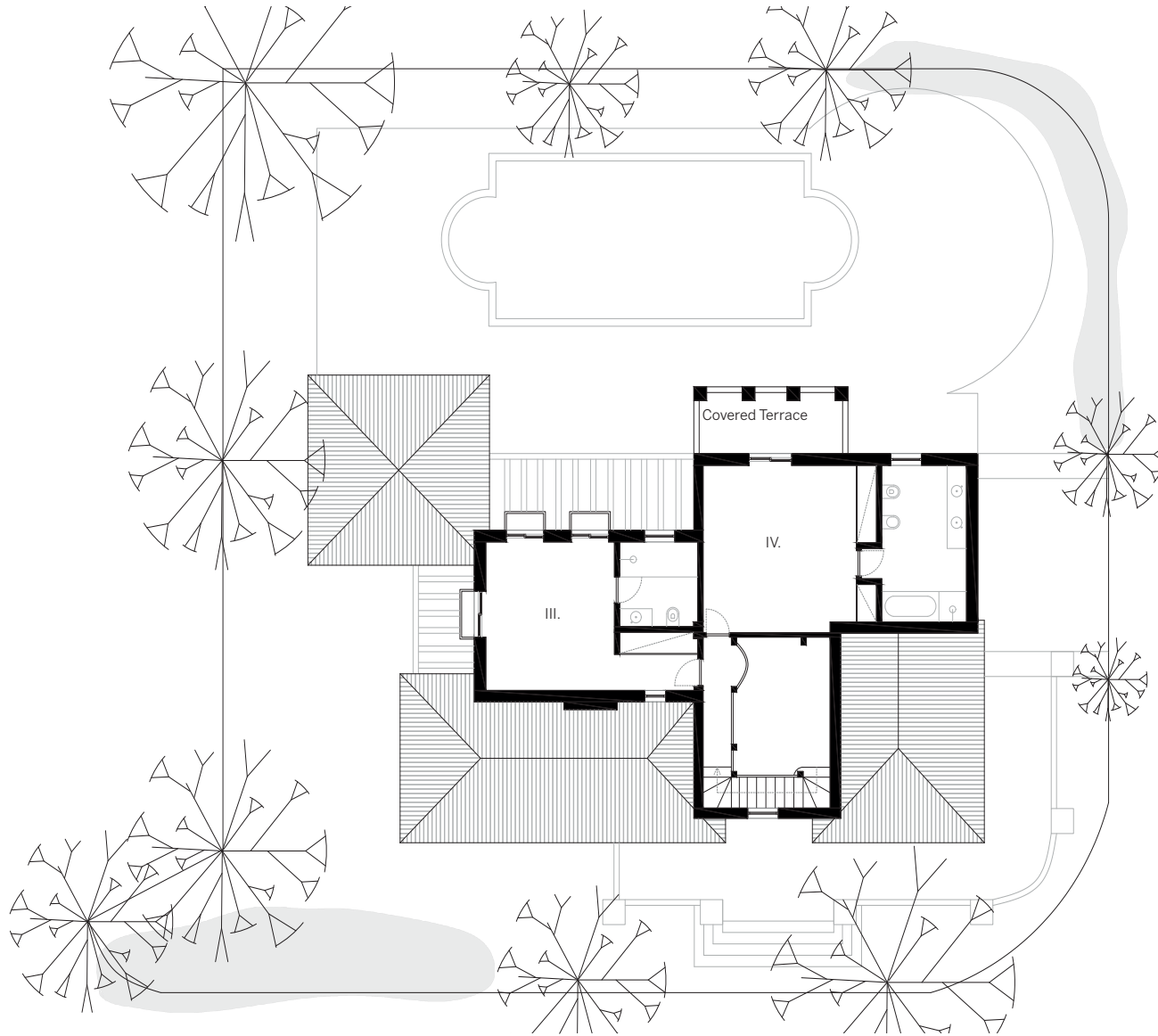




Ground Floor

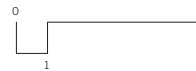
Entrance	23.30 m ²
I. Bedroom	14.80 m ²
Bathroom	4.83 m ²
II. Bedroom	14.56 m ²
Bathroom	5.13 m ²
Kitchen	18.34 m ²
Living Room	32 m ²
Dining Room	14.39 m ²
Covered Terrace	25.86 m ²

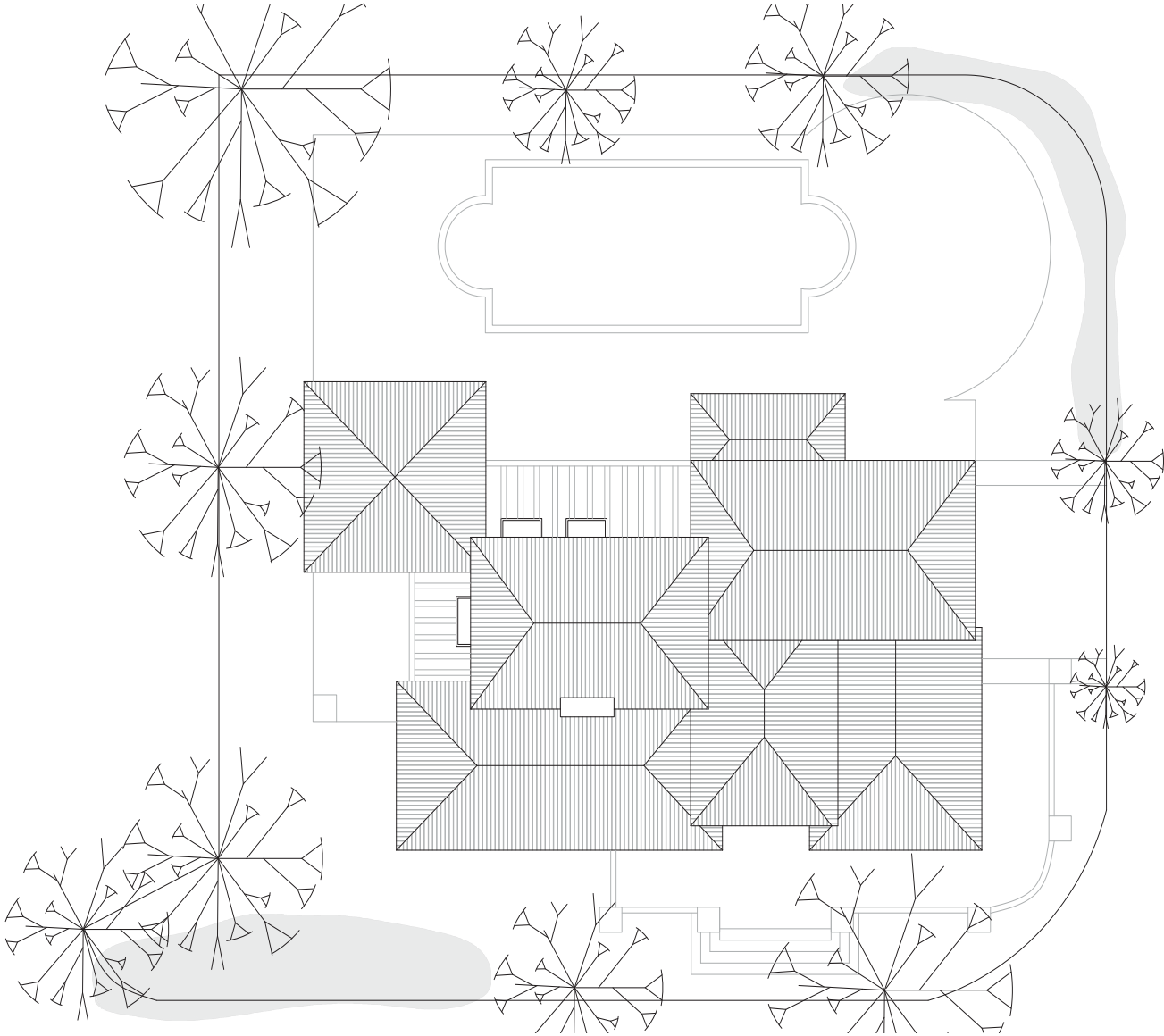




First Floor

III. Bedroom	18.57 m ²
Bathroom	7 m ²
IV. Bedroom	27.77 m ²
Bathroom	13.79 m ²
Covered Terrace	9.00 m ²





Roof Plan

Bedroom	21.51 m ²
Uncovered Terrace	25 m ²

