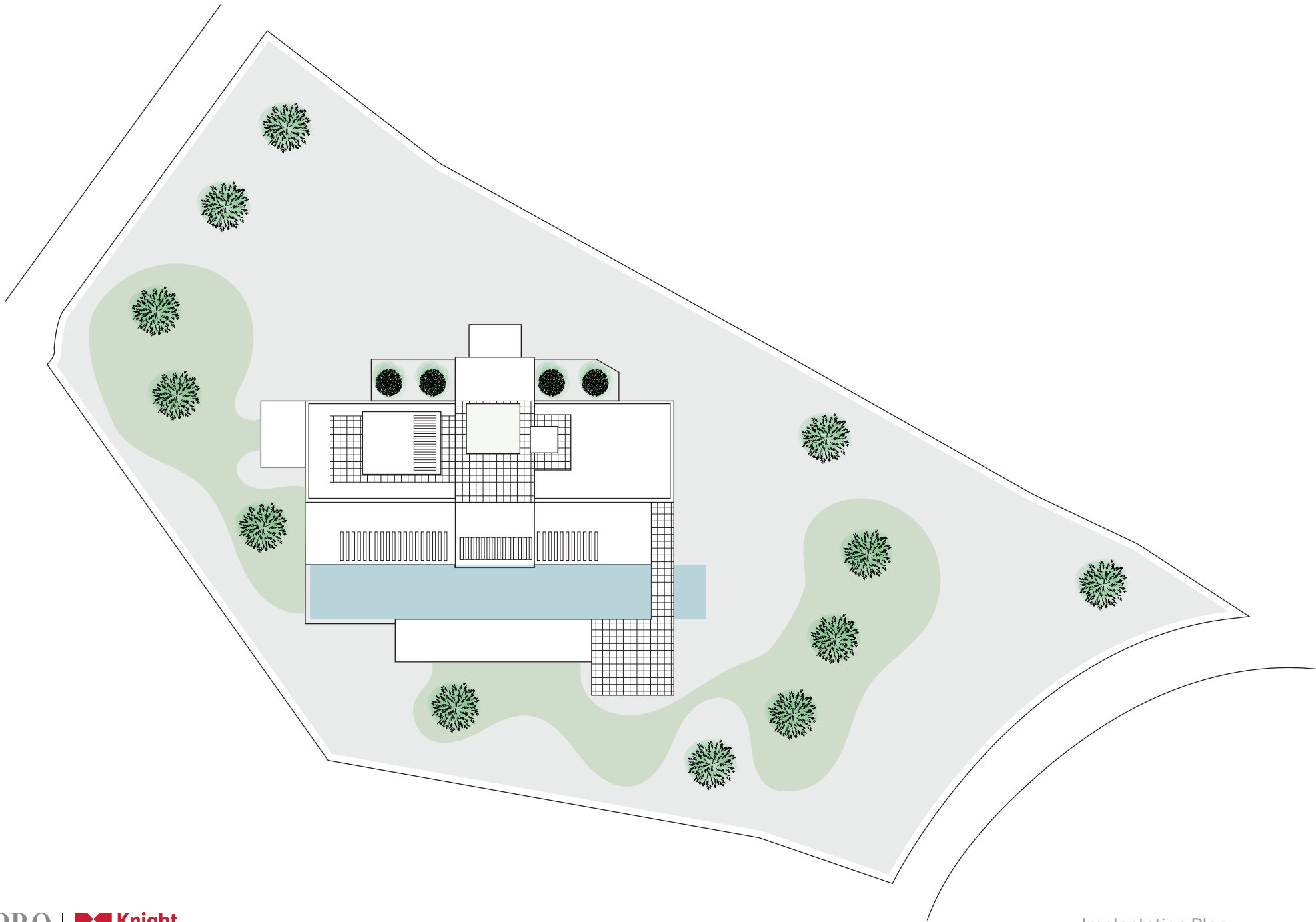


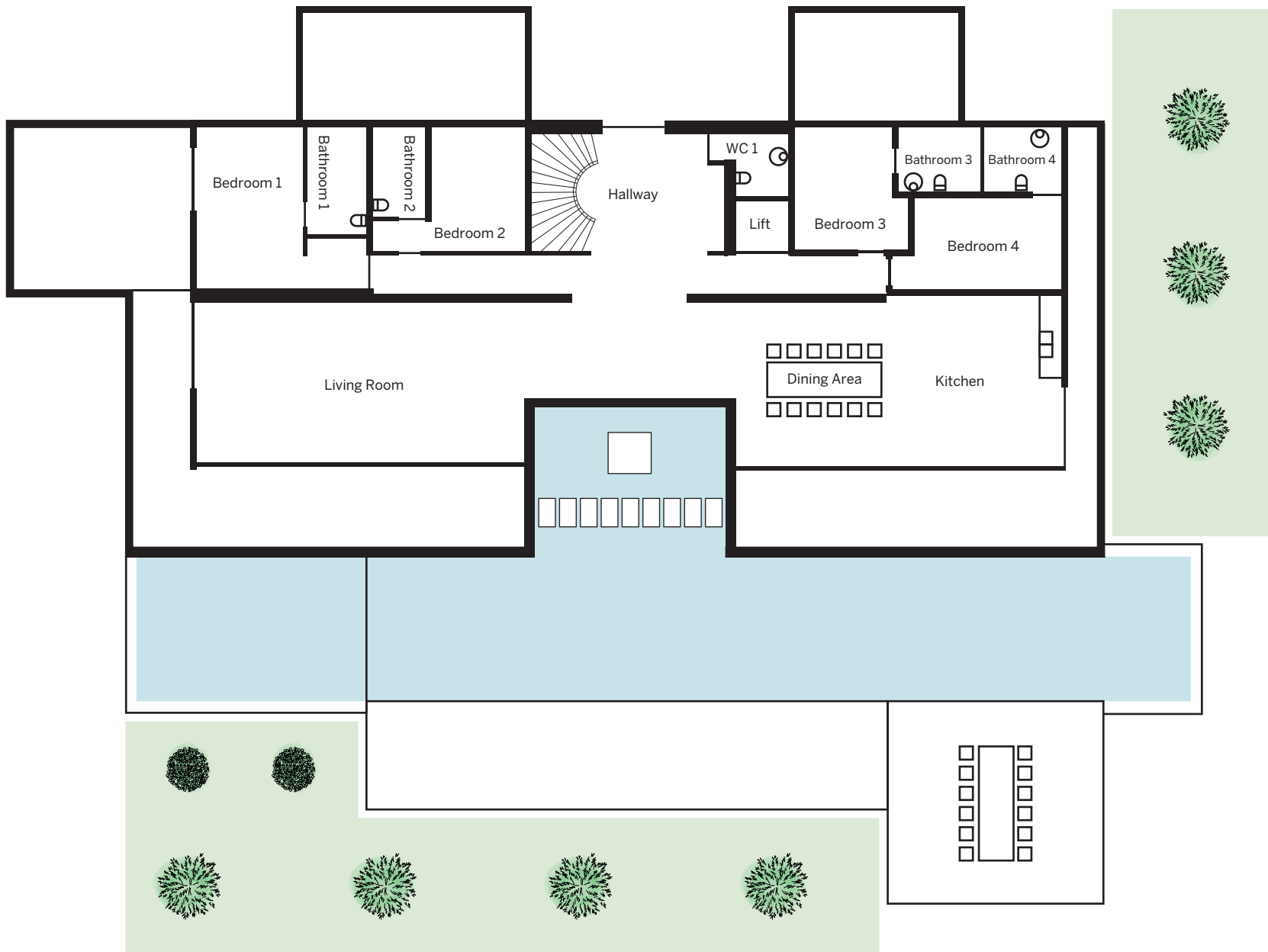
REF 1870

FLOOR PLAN

MAPRO
REAL ESTATE · IMOBILIÁRIA

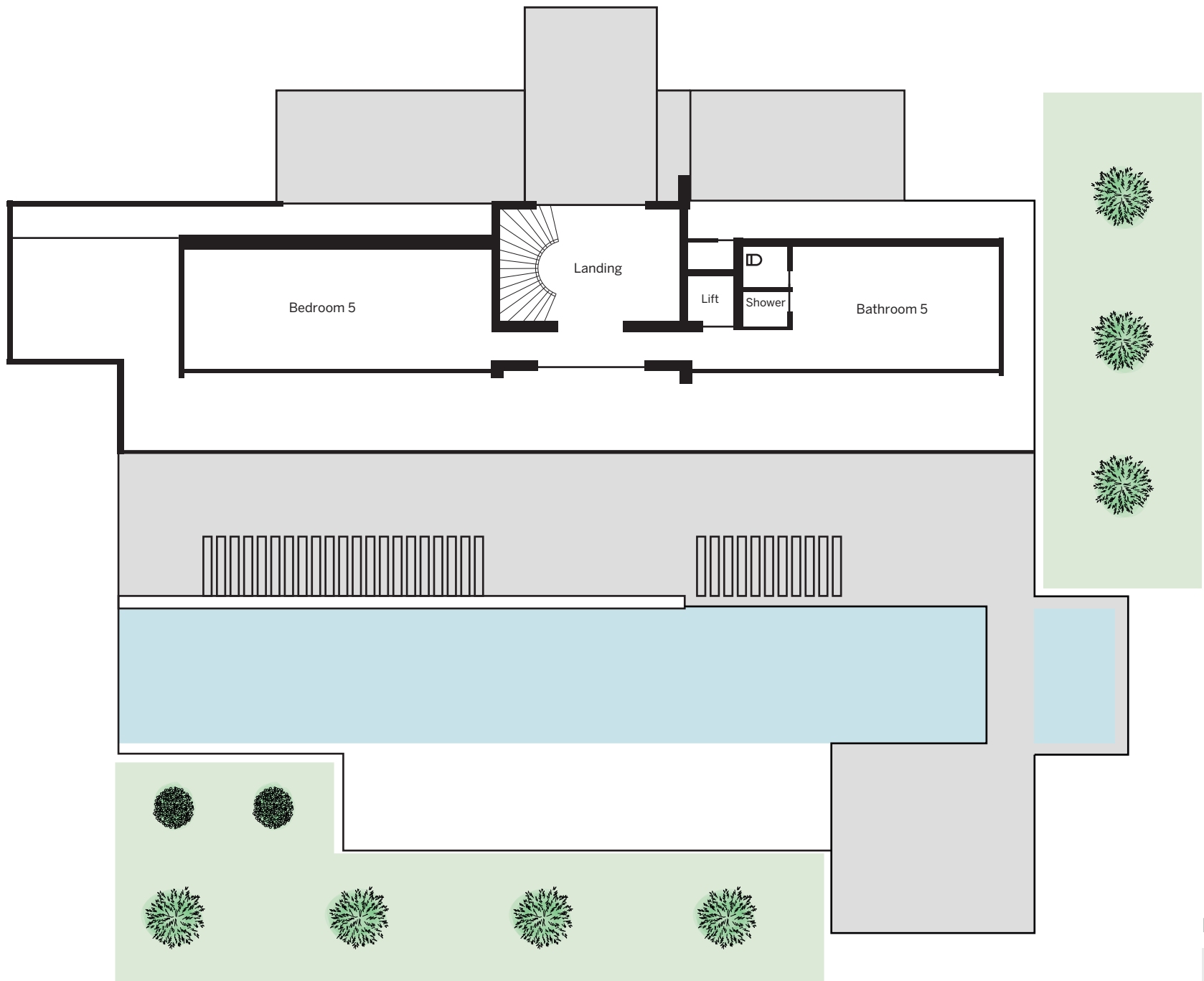






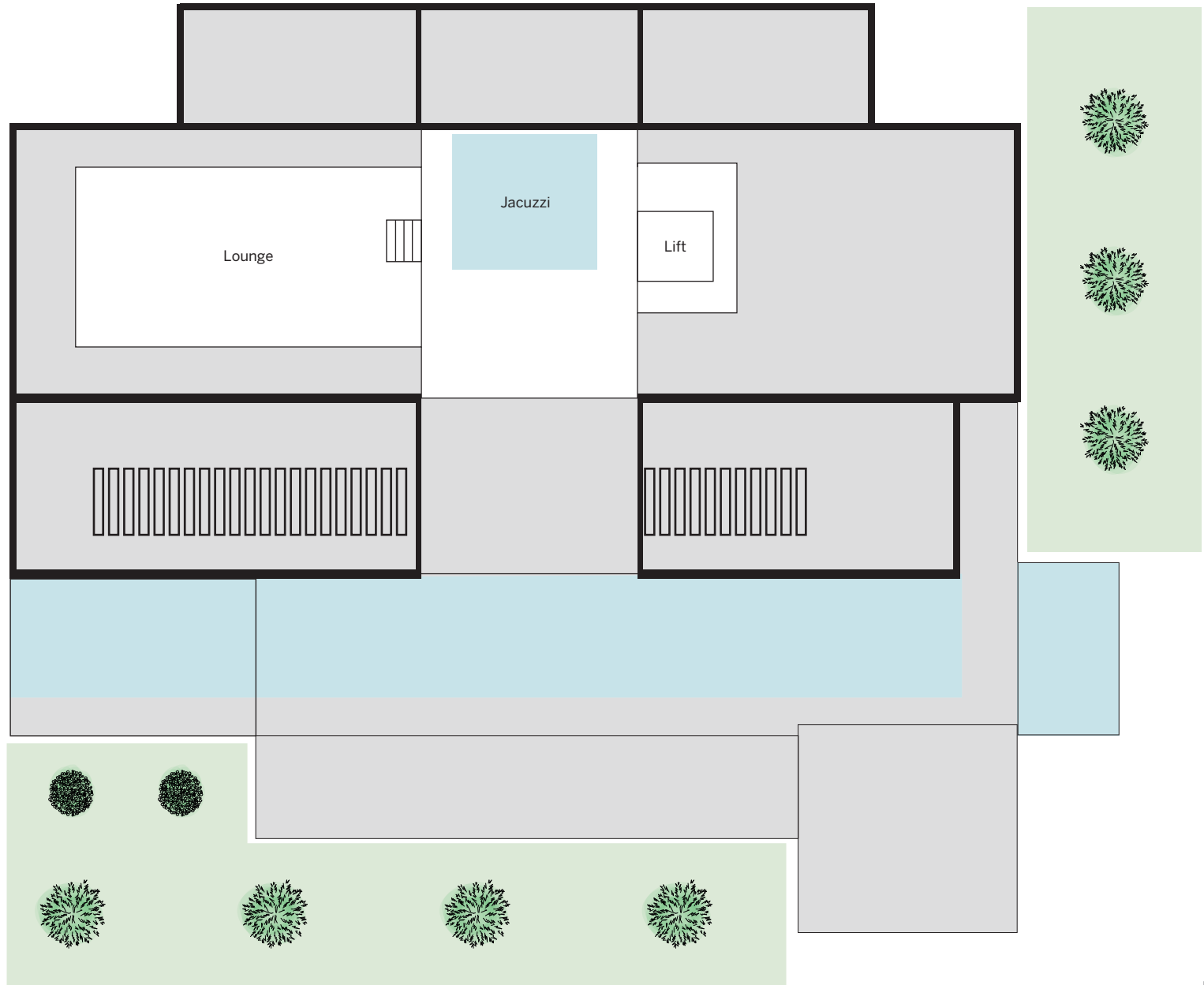
Ground Floor

Ground Floor Area	350 m ²
Hallway	19.60 m ²
Bedroom 1	15.37 m ²
Bathroom 1	5.42 m ²
Bedroom 2	23.76 m ²
Bathroom 2	6.91 m ²
Living Room	62.70 m ²
Dining Room	28.70 m ²
Kitchen	35.10 m ²
WC 1	4.90 m ²
Bedroom 3	15.10 m ²
Bathroom 3	5.70 m ²
Bedroom 4	17.09 m ²
Bathroom 4	5.60 m ²



First Floor

First Floor Area	136 m ²
Landing	11.39 m ²
Bedroom 5	49.80 m ²
Bathroom 5	41.12 m ²



Rooftop

Rooftop Area	19.35 m ²
--------------	----------------------



Lower Level

Lower Level Area	573.41 m ²
Lounge	30.07 m ²
Wine Cellar	8.96 m ²
Laundry	8.99 m ²
Bedroom 6	22.46 m ²
Bathroom 6	6.04 m ²
Garage	79.09 m ²
Spa	26.16 m ²
Gym	44.20 m ²
WC 2	4.33 m ²
WC 3	3.55 m ²
Pantry	4.40 m ²
Storage	9.46 m ²
Self Contained Apartment	25.80 m ²



Edifício Mapro · Av. Alm. Mendes Cabeçadas
8135-106 Almancil · Algarve · Portugal
T. (+351) 289 390 880

CHAMADA PARA A REDE FIXA NACIONAL - LANDLINE

info@maprorealestate.com
www.maprorealestate.com

MAPRO – Sociedade de Mediação Imobiliária, Lda.
AMI 317

The information provided does not come from any contract, can be changed at any time and was written based on our knowledge of the area in question.