

ALCEDO
VILLAS

UNIT C11



Alcedo Villas

Unit C11 | V4

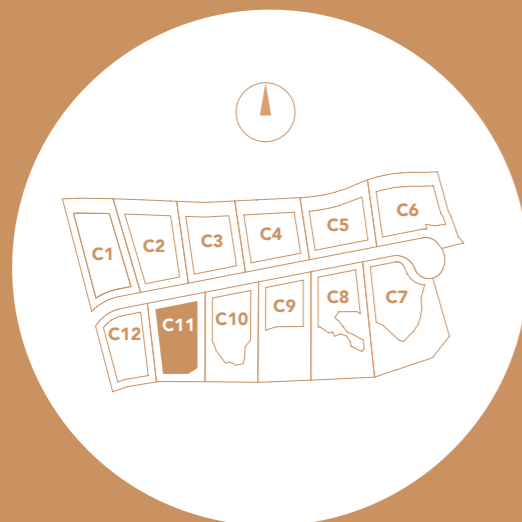
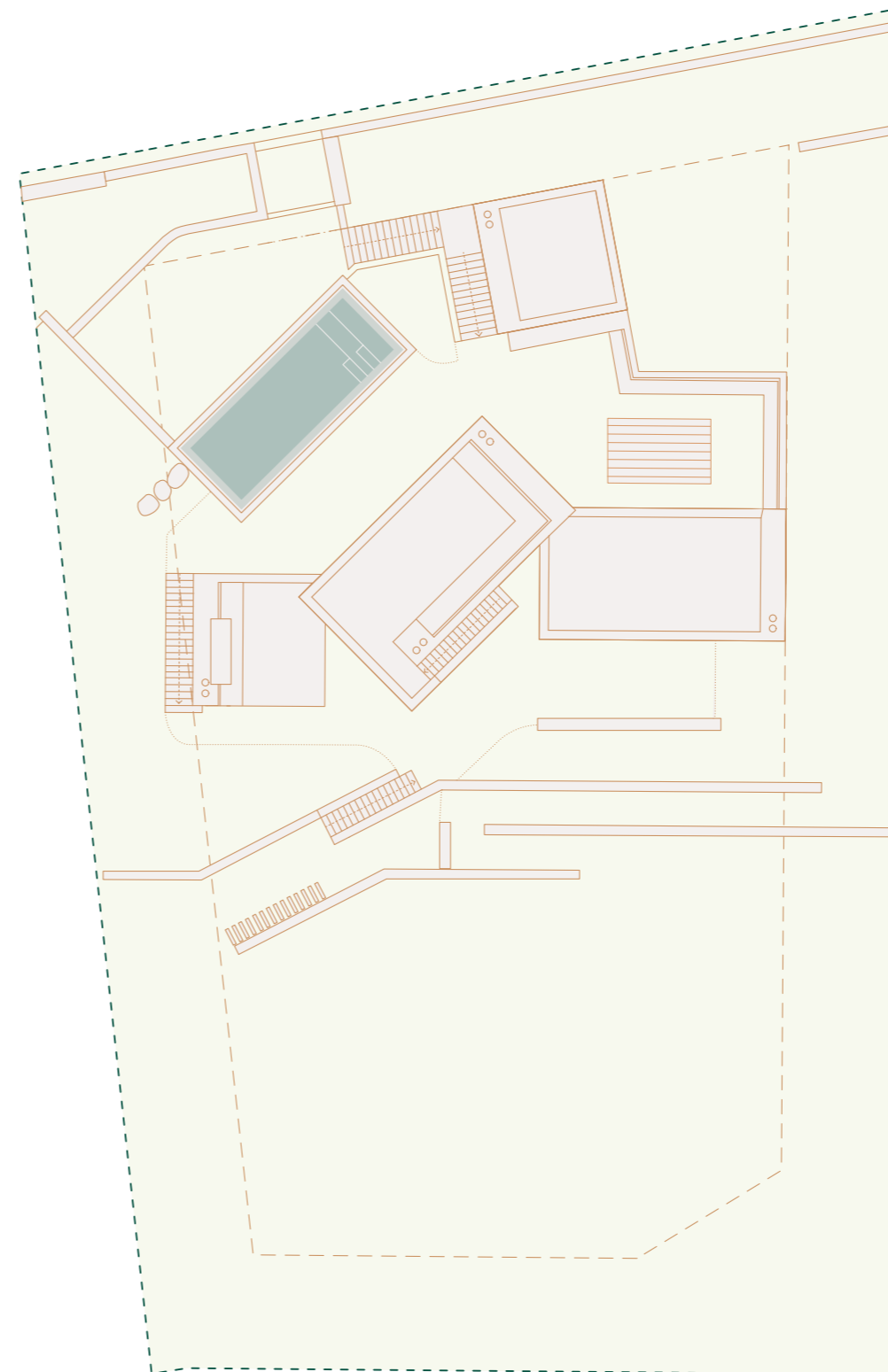
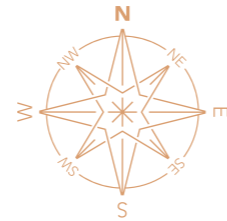
PLOT AREA — 2017 m²

(all areas shown in this page are gross)

1. Int. Gross Const. Area — 340,3 m²
 - a. Upper Level — 100,6 m²
 - b. Lower Level — 201,7 m²
 - c. Basement — 38 m²
2. Covered Terraces — 16,4 m²
3. Uncovered Terraces — 0 m²
4. Rooftop Terraces — 83,1 m²
5. Technical Areas — 33,8 m²
 - a. Lower Level — 8,9 m²
 - b. Basement — 24,9 m²
6. Garage — 62,6 m²
7. Pool — 10 m x 4 m

— Int. Gross Const. Area
+ Technical Areas
+ Garage (1+5+6) | 436,7 m²

— Total Area (1+2+3+4+5+6) — 536,2 m²





Alcedo Villas

Unit C11 | V4

BASEMENT

(all areas shown in this page are usable)

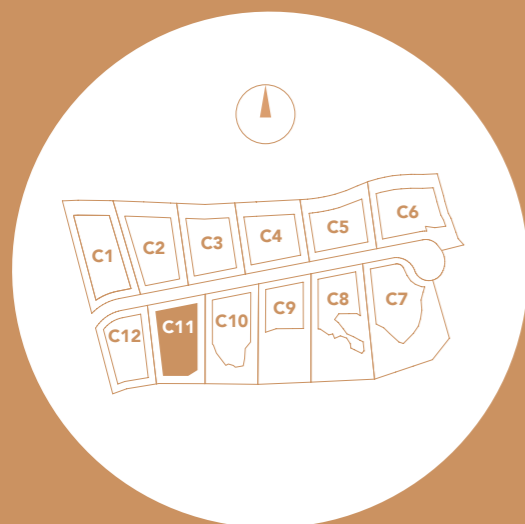
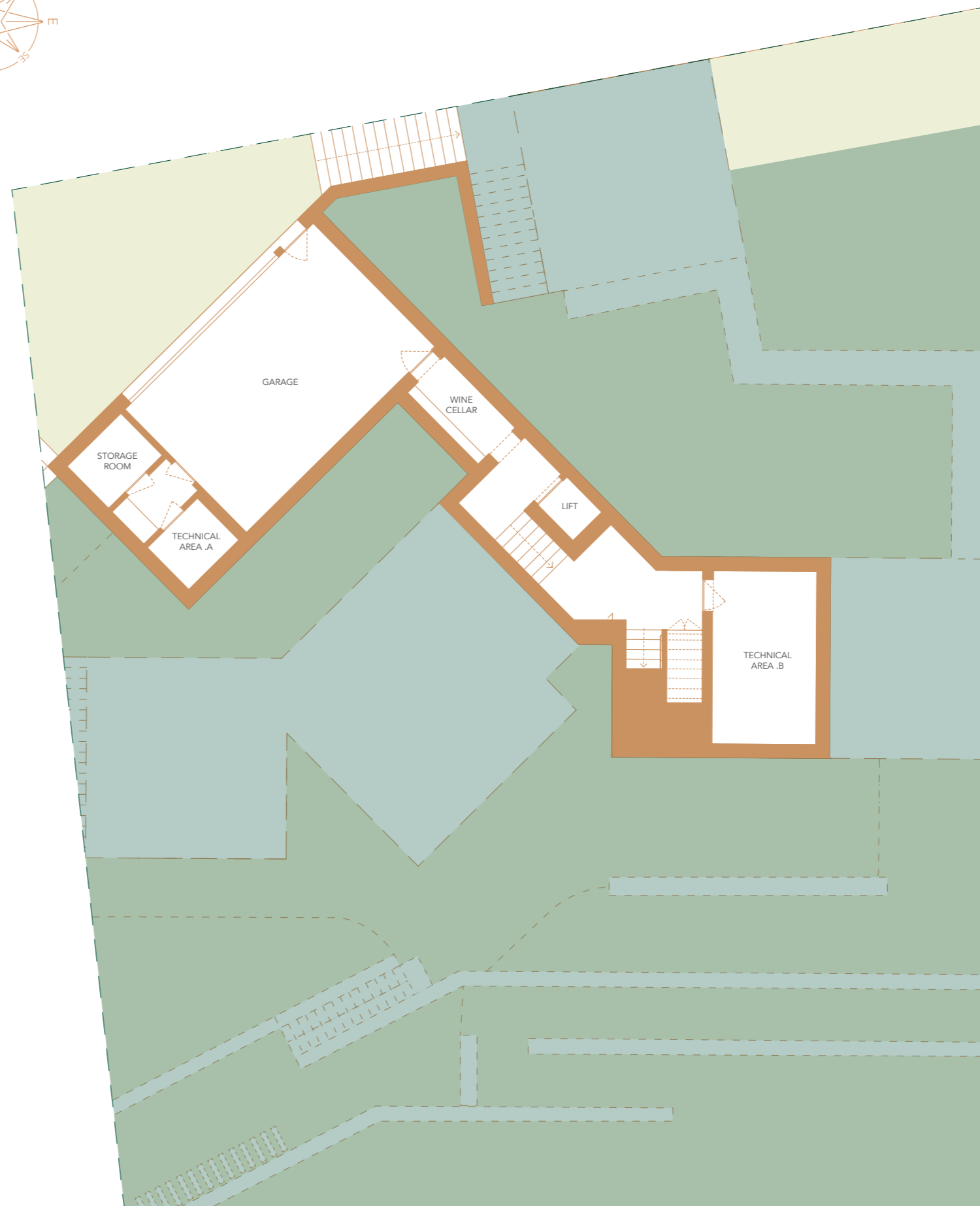
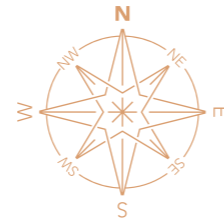
Garage — 38,3 m²

Wine Cellar — 4,4 m²

Technical Area .A — 3,5 m²

Technical Area .B — 18,5 m²

Storage Room — 3,7 m²





Alcedo Villas

Unit C11 | V4

LOWER LEVEL

(all areas shown in this page are usable)

TV Room — 15,5 m²

Closet — 3,9 m²

Bathroom — 4 m²

Living Room — 37,1 m²

WC — 3,3 m²

Kitchen and Dining Room — 36,8 m²

Technical Area — 7,2 m²

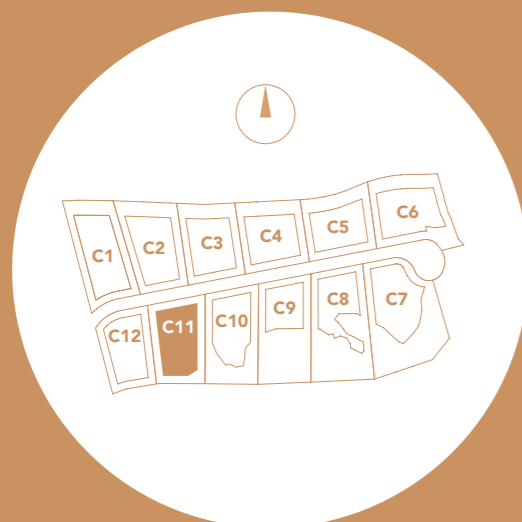
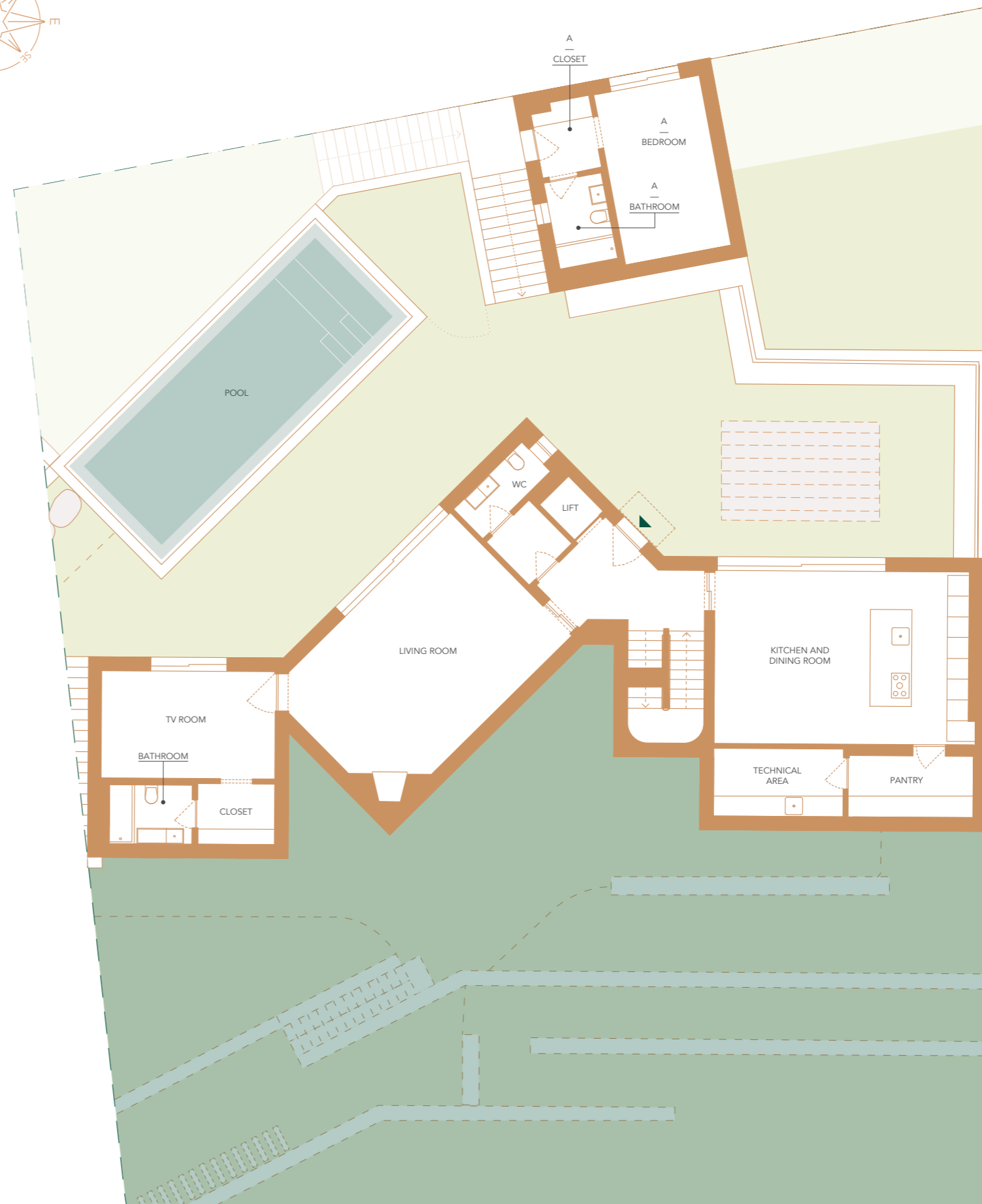
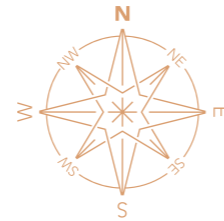
Pantry — 6,4 m²

A

Bedroom — 15,5 m²

Closet — 3,5 m²

Bathroom — 4,2 m²





Alcedo Villas

Unit C11 | V4

UPPER LEVEL

(all areas shown in this page are usable)

A

Bedroom — 17,3 m²

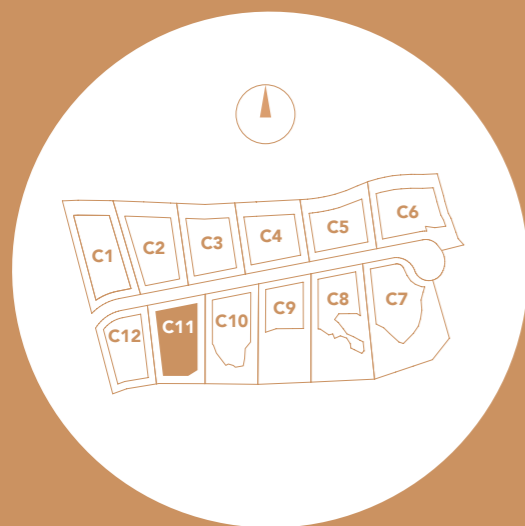
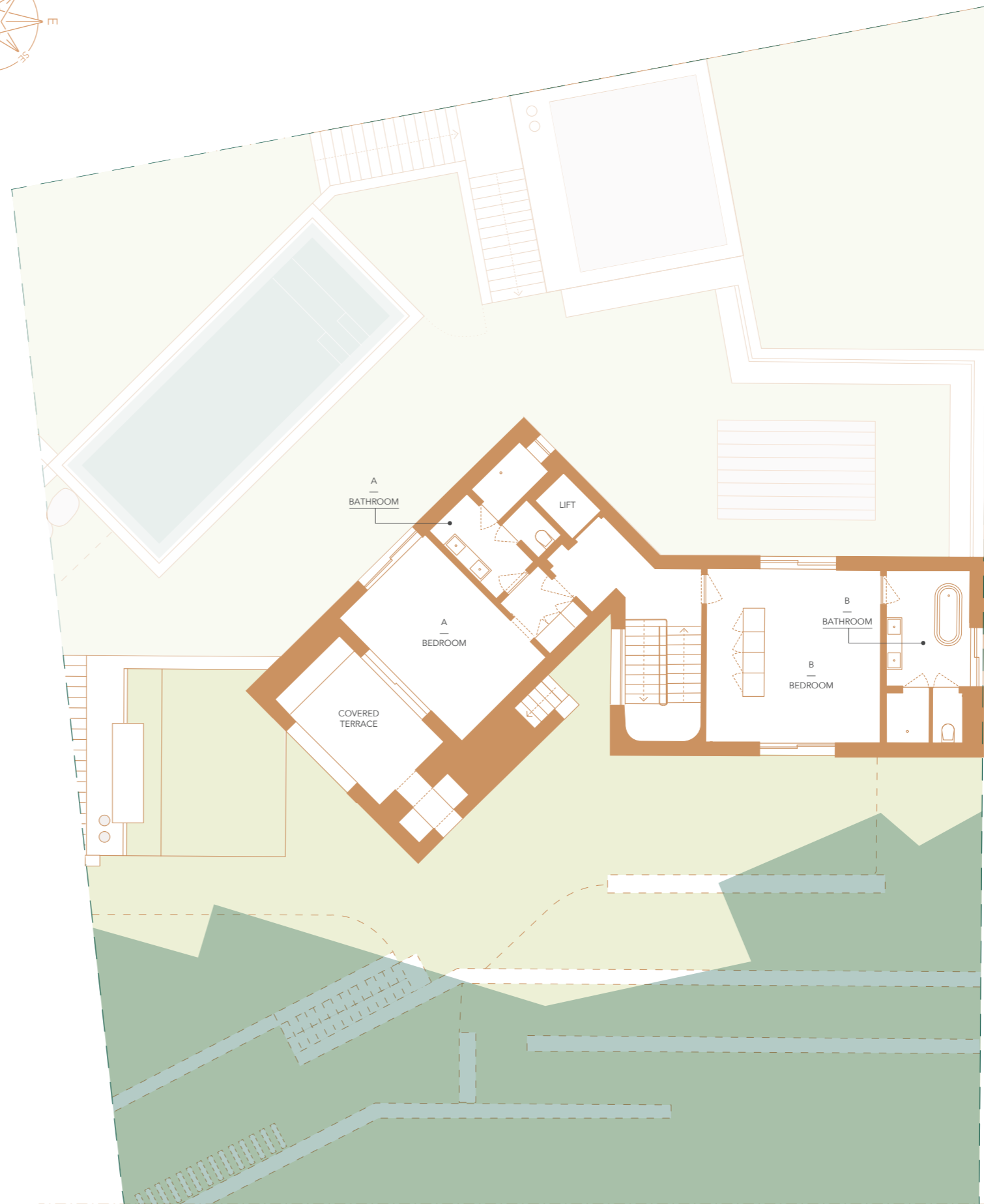
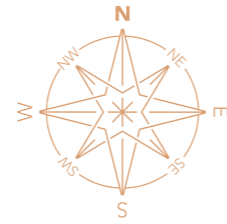
Bathroom — 11,6 m²

Covered Terrace — 14,9 m²

B

Bedroom — 25,3 m²

Bathroom — 11,3 m²





Alcedo Villas

Unit C11 | V4

ROOFTOP

(all areas shown in this page are usable)

Terrace — 52,5 m²

