

SANTA BÁRBARA DE NEXE

Ref. 2449

€ 7.950.000 * | £ 6.986.699

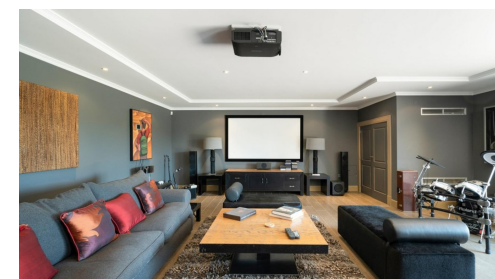


ESPECTACULAR MANSÃO DE LUXO

This exclusively elegant property is nestled on the hillside in a tranquil and idyllic setting within the picturesque village of Santa Barbara de Nexe. It is just 10 minutes East of Loulé, 20 minutes from the luxury Quinta do Lago and Vale do Lobo golfing resorts and the coast with numerous restaurants, sports facilities and beaches. Completed in 2014 this country manor house built to an exceptional standard includes the main house which comprises 6 bedrooms and 6 bathrooms and a guest house which comprises one bedroom and one bathroom. The state of the art specification includes an AMX intelligent home system, Lutron lighting, underfloor heating and cooling, 2 kitchens fitted in Solid American walnut with Wolf, Sub Zero and Miele appliances, a heated infinity pool, floodlit tennis pavilion, in addition to staff accommodation, and an additional laundry. Adjacent to the guest house is the large home gym with an en-suite shower room, garaging for 5 cars and ample storage and covered parking. This grand and very private estate depicts the style of a small boutique resort.

Características

Lote	7932.51 m ²
Área do Edifício:	422.04 m ²
Domínio	Empresa
Quarto:	8
Casa de banho:	7
Constr. Year:	2011
Garagem:	Múltipla
Air cond.:	Sim
Aquecimento:	Pavimento (Aquecido & Arrefecido)
Pool:	Infinito
Vistas:	Campo , Panorâmica , Montanha
Golfe:	14Km
Praia:	14Km
Aeroporto:	12Km



MAPRO
REAL ESTATE - IMOBILIÁRIA

Knight Frank

+351 289 390 880
info@maprorealestate.com | www.maprorealestate.com
AMI License 317

B
CLASSE ENERGÉTICA

Estes detalhes são apenas guias. Não pertencem a qualquer contrato e poderão ser alterados, a qualquer momento, sem aviso prévio.