

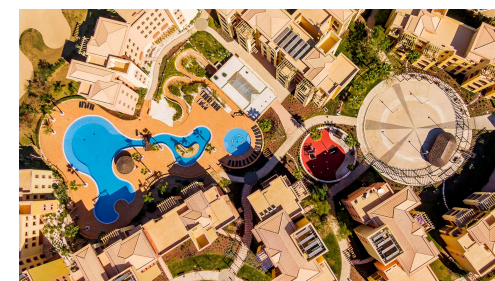


APARTAMENTO C/ 2 QUARTOS NO RÉS-DO-CHÃO

A south-west, ground-floor, 2 bedroom apartment situated within a private and secure development in Vilamoura just a few minutes from the beach and within walking distance to the golf courses of the area. This property comprises a fully fitted kitchen equipped with AEG appliances, with breakfast bar and open hatch to the lounge/dining area and access to a small terrace with washer/dryer. The lounge/dining area features a large covered terrace area looking out towards the communal areas, perfect for "al-fresco" dining. There are 2 bedrooms, the double bedroom being en-suite and the twin bedroom having access to a separate WC with shower. Both bathrooms include under-floor heating, heated towel rails and air conditioning is provided throughout. The apartment also provides 2 parking spaces in the communal garage as well as a storage unit. The development offers many facilities such as an indoor heated & outdoor swimming pool, landscaped gardens, a kids club and a gym. Within close distance to all local amenities, this property makes a great hassle-free holiday home!

Características

Área do Edifício:	178.60 m ²
Domínio:	Privado
Quarto:	2
Casa de banho:	2
Constr. Year:	2009
Garagem:	Comum
Air cond.:	Central , Individual
Aquecimento:	Pavimento Radiante (WC)
Pool:	Exterior , Interior , Comum
Vistas:	Área Comum
Golfe:	Distância a Pé
Praia:	2Km
Aeroporto:	20Km



MAPRO

REAL ESTATE
IMOBILIÁRIA

+351 289 390 880

info@maprorealestate.com | www.maprorealestate.com

AMI License 317

Estes detalhes são apenas guias. Não pertencem a qualquer contrato e poderão ser alterados, a qualquer momento, sem aviso prévio.

