

Quinta do Lago · Algarve

11 LAGO



Mapro Sociedade Mediação Imobiliária Lda.

Edifício Mapro · Av. Alm. Mendes Cabeçadas · 8135-106 Almancil · Algarve, Portugal

Tel. (+351) 289 390 880 · info@maprorealestate.com

AMI License 317

www.maprorealestate.com





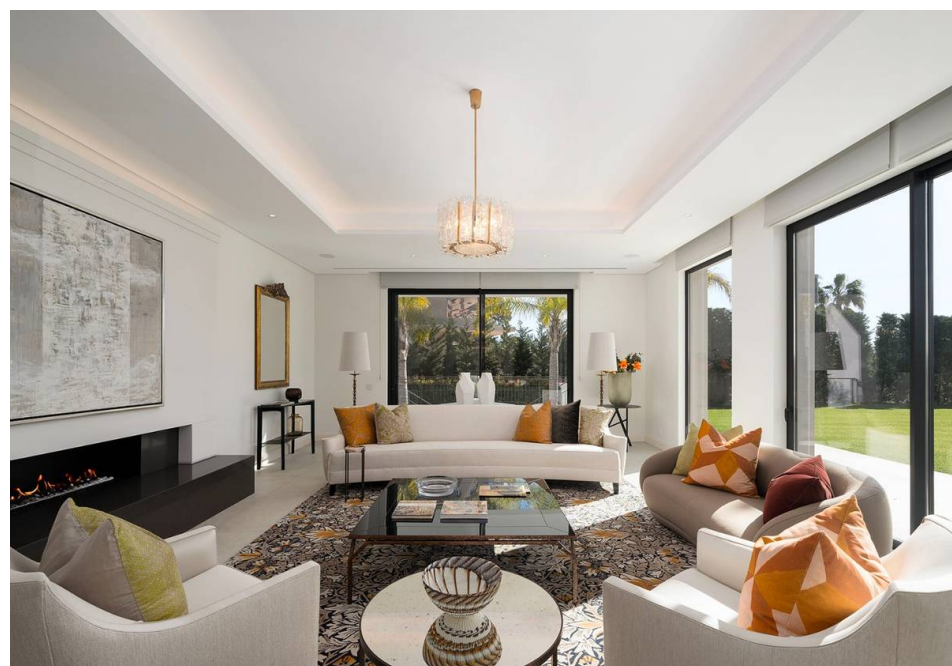
11 LAGO

Located on an elevated position within a plot near the lake, this timeless villa curates contemporary design with classic elegance, showcasing exquisite craftsmanship and a warm, distinctive ambiance.

The alluring villa comprises a welcoming spacious reception hall leading to the main lounge area suffused with natural light pouring in from all angles. The fully fitted and equipped kitchen includes top notch appliances including a Liebherr fridge freezer, a Bora cooker on the central island. The area is open plan with the dining room and leads out to the extensive covered BBQ and eating area, with the sparkling pool area beyond. There are two beautiful bedroom suites on this level and a guest WC.

The first floor has two spacious bedroom suites including the main bedroom which features a his and her bathroom and access to an exterior terrace with picturesque views of the sea, its dunes and the serene lake. The roof terrace includes a chic outdoor bar area with equipment. The views from this terrace are mesmerizing.

The lower level with natural light includes two further bedrooms, one is currently a study and a separate bathroom. There is an entertainment area with a bar which leads down to the spacious family like TV/cinema area. The sliding doors from this room also access the pool area. This level also includes a gym/yoga area with a shower room and WC. There is a great laundry room and additional storage and a garage. There is a lift that serves all three floors and the roof terrace. The private pool area, an oasis for relaxation is surrounded by ample terrace, enchanted by the additional adopted area, which has been incorporated into the immaculately elegant landscape.





€ 13.500.000
PRIX

REF 2184
FAITS & CARACTÉRISTIQUES


887m²


3.100m²


6


8



Propriétaire: Entreprise

Année de Constr. 2024

Jardin Paysagé

Piscine Couverte, Heated (Pre-installation), Overflow, Saline

Garage Double

Chauffage Chauffage au sol (Hydraulique)

Air Conditionné Ducted System

Alarme Vidéo Intercom, Système Reconnaissance de Visage

Cheminée Électrique

Meublé Inclus

Facilities Système Domotique, Eau Domestique Panneaux Solaires

Caractéristiques Élévateur, Terrasse sur le toit, Zone Polyvalente

Vues Lac, Mer

Plage Walking Distance

Golf Walking Distance

Aéroport 20Km

NOTE IMPORTANTE: Les informations fournies servent seulement de référence, ne font partie d'aucun contrat et peuvent changer à tout moment.

