

Encosta do Lobo · Algarve

WALKING DISTANCE TO THE BEACH



Mapro Sociedade Mediação Imobiliária Lda.

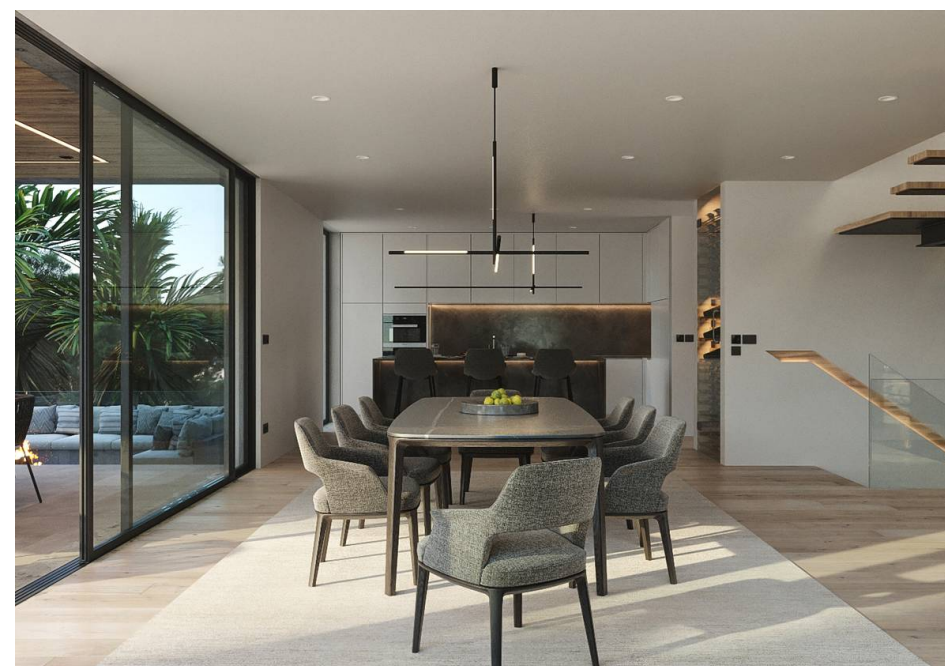
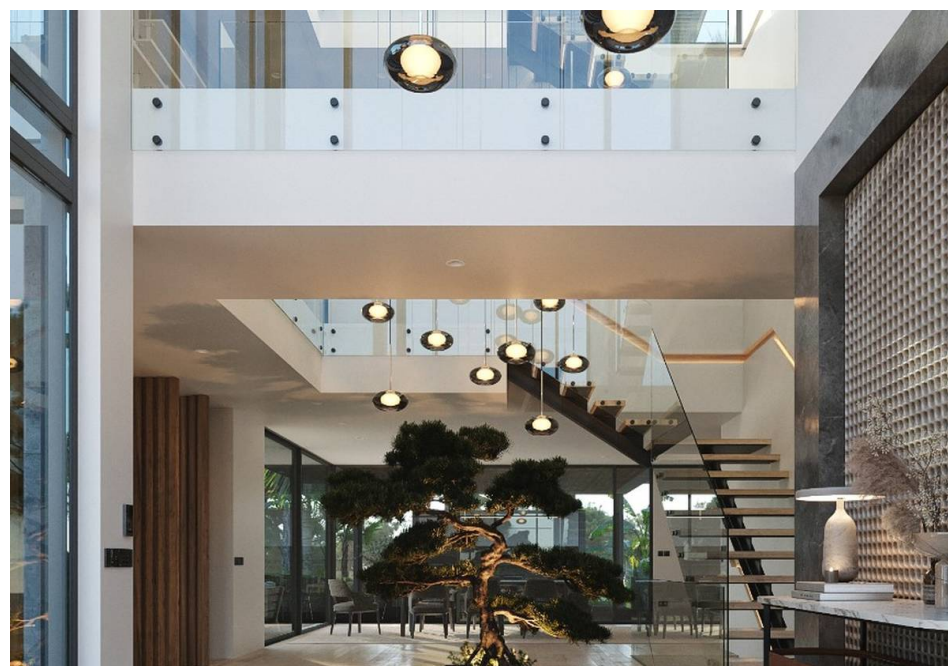
Edifício Mapro · Av. Alm. Mendes Cabeçadas · 8135-106 Almancil · Algarve, Portugal
Tel. (+351) 289 390 880 · info@maprorealstate.com
AMI License 317
www.maprorealstate.com





WALKING DISTANCE TO THE BEACH


A plot with a contemporary project situated within the prestigious Vale do Lobo golf and beach resort, located just minutes from the beach with views towards the coastline and picturesque hill views to the north. The contemporary design of the current project offers large open plan living. The lower level includes a 3 car garage opening into the entertainment area with a bar and cinema room behind this area. There is also a gym, sauna area and the 6th bedroom suite. The ground floor includes a spacious lounge area, leading out to the grand terrace with the pool stretching across the front of the lounge. The exterior terrace also runs in front of the dining area into a separate sunken lounge with a fire pit feature. The open kitchen centralises the heart of the home and includes a laundry room and pantry. The cosy snug area is just off the kitchen. There is also a bedroom ensuite and a WC on this floor. On the first floor there are 4 bedrooms ensuite including the master bedroom suite with a dressing room. All with access to a terraced area. The general design of the project works around the outside/in living concept, using your home as a part of your exterior lifestyle. The orientation of the villa is facing south. The build dimensions include internal build area with covered ground floor terrace.








P.O.A.
PRICE

REF 3302
FACTS & FEATURES


652.41m²


862m²


6


8

Ownership: Private

Swimming Pool Project

Views Sea, Garden

Golf 2Km

Garden Project

Garage Project

Beach Walking Distance

Airport 20Km



IMPORTANT NOTICE: These details are guidelines only. They do not form part of any contact and may change at any time without prior notice.

