

Loulé • Algarve

3 BED MODERN APARTMENT



Mapro Sociedade Mediação Imobiliária Lda.

Edifício Mapro • Av. Alm. Mendes Cabeçadas • 8135-106 Almancil • Algarve, Portugal

Tel. (+351) 289 390 880 • info@maprorealstate.com

AMI License 317

www.maprorealstate.com

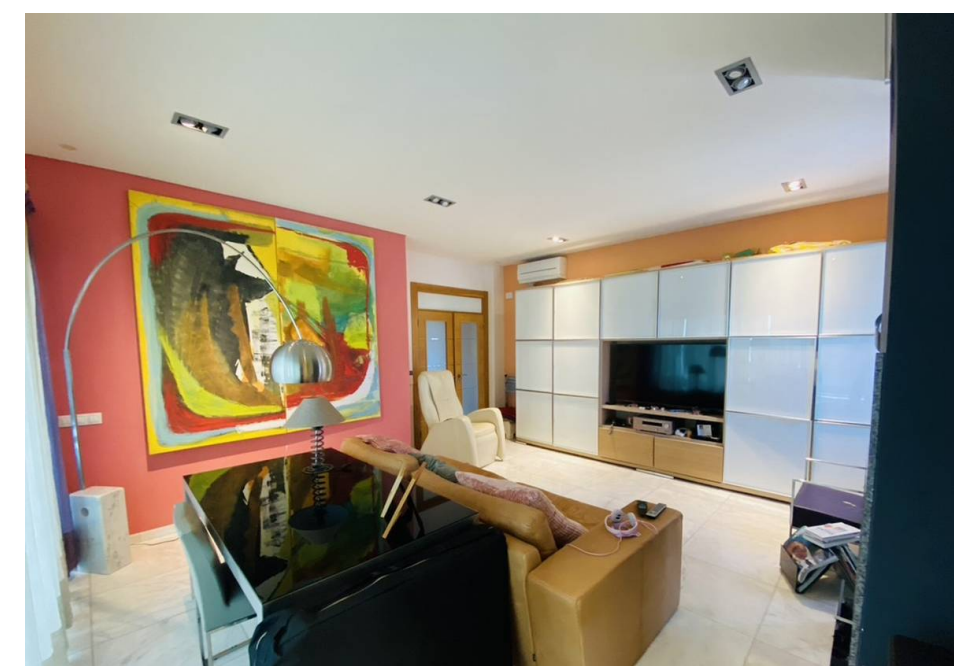
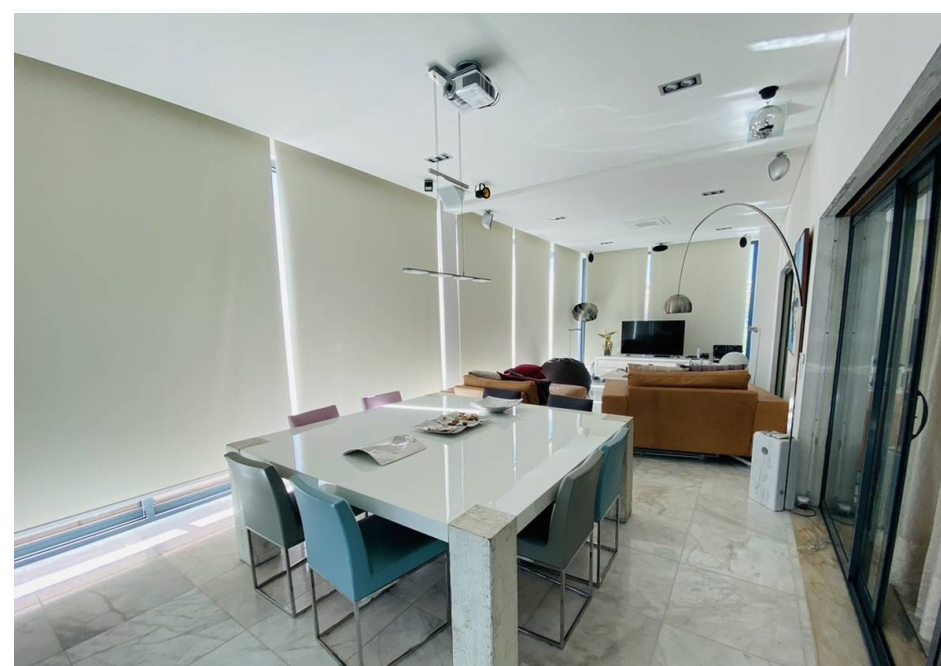
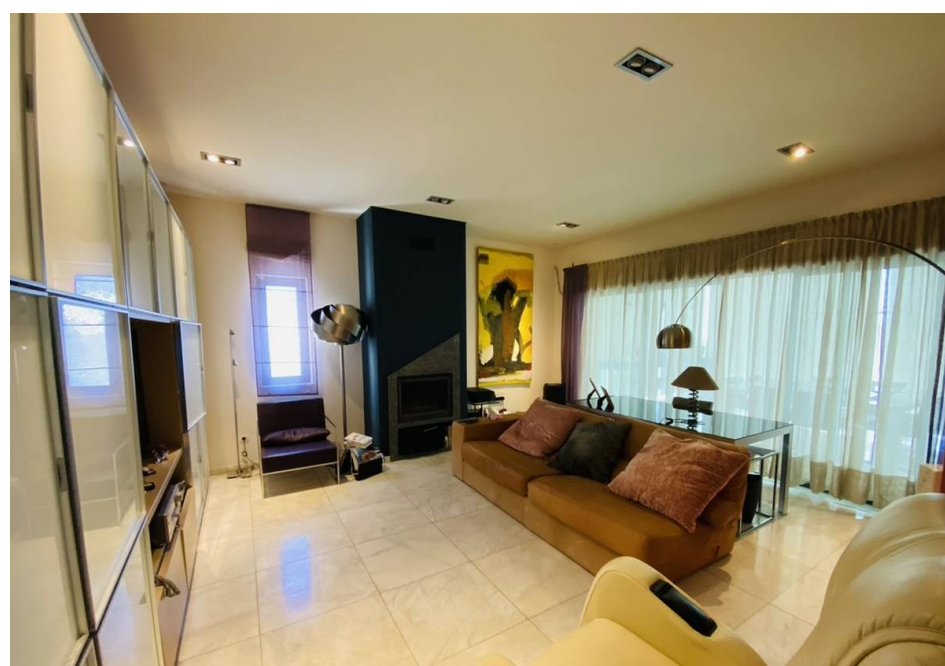
MAPRO
REAL ESTATE • IMOBILIÁRIA

**Knight
Frank**



3 BED MODERN APARTMENT

This 3 bedroom modern apartment is situated in the entrance of Loulé, within walking distance to the town, supermarkets and local shops. Providing modern finishings and tall ceilings throughout, the property comprises a fully fitted and equipped kitchen, a spacious open plan lounge with wood burner fireplace and dining area and access to a terrace with electric canopy providing countryside and sea views. There are 3 bedroom suites with fitted wardrobes and a cloakroom. The apartment offers a parking space and an additional space for a motorbike as well as a spacious storage room. Air conditioning, electric shutters, surround sound and CCTV is also provided throughout.





€ 530.000
PRICE

REF 3225
FACTS & FEATURES


198.45m²


m²


3


4


CLASSE ENERGETICA

Ownership: Private

Garden Terrace

Heating Air Conditioning

Fireplace Wood burner

Extras CCTV, Video Entry,
Electric Canopy, Surround
Sound, Electric Shutters

Beach 13Km

Airport 19Km

Constr. Year 2007

Garage Communal

Air Conditioning Split Units

Furnished Negotiable

Landscapes Countryside,
Distant Sea

Golf 12Km

IMPORTANT NOTICE: These details are guidelines only. They do not form part of any contact and may change at any time without prior notice.

