

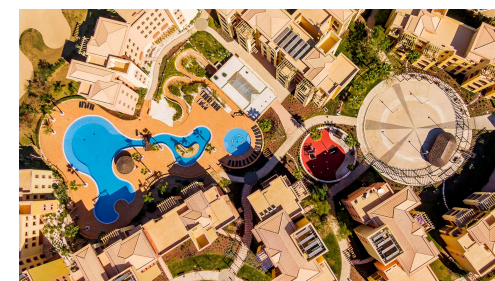


## A 2 BED GROUND-FLOOR APARTMENT

A south-west, ground-floor, 2 bedroom apartment situated within a private and secure development in Vilamoura just a few minutes from the beach and within walking distance to the golf courses of the area. This property comprises a fully fitted kitchen equipped with AEG appliances, with breakfast bar and open hatch to the lounge/dining area and access to a small terrace with washer/dryer. The lounge/dining area features a large covered terrace area looking out towards the communal areas, perfect for "al-fresco" dining. There are 2 bedrooms, the double bedroom being en-suite and the twin bedroom having access to a separate WC with shower. Both bathrooms include under-floor heating, heated towel rails and air conditioning is provided throughout. The apartment also provides 2 parking spaces in the communal garage as well as a storage unit. The development offers many facilities such as an indoor heated & outdoor swimming pool, landscaped gardens, a kids club and a gym. Within close distance to all local amenities, this property makes a great hassle-free holiday home!

## Facts & Features

Built Area:	178.60 m <sup>2</sup>
Ownership	Private
Bedroom:	2
Bathroom:	2
Constr.	2009
Year:	
Garage:	Communal
Air cond.:	Ducted , Split Units
Heating:	Under-floor (Bathrooms)
Pool:	Outdoor , Indoor , Communal
Landscapes:	Communal Area
Golf:	Walking Distance
Beach:	2Km
Airport:	20Km



MAPRO

REAL ESTATE  
IMOBILIÁRIA

+351 289 390 880

info@maprorealestate.com | [www.maprorealestate.com](http://www.maprorealestate.com)

AMI License 317

These details are guidelines only. They do not form part of any contract and may change at any time without prior notice

