

# VARANDAS DO LAGO

Ref. 1765

P.O.A.

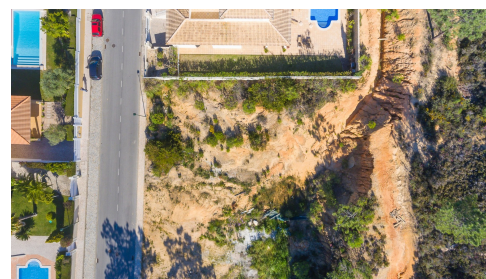


## AN EXCELLENT PLOT NEAR THE COAST

Located in the popular development of Varandas do Lago, between Quinta do Lago and Vale do Lobo, this south-facing elevated 800m<sup>2</sup> plot offers an excellent opportunity to build a modern villa of 320m<sup>2</sup> close to the beautiful Algarvian coastline.

### Facts & Features

Plot Size	800 m <sup>2</sup>
Built Area:	320 m <sup>2</sup>
Ownership	Private
Bedroom:	N/A
Bathroom:	N/A
Views:	Green Zone
Golf:	4Km
Beach:	2Km
Airport:	20Km



**MAPRO**  
REAL ESTATE - IMOBILIÁRIA



+351 289 390 880  
info@maprorealestate.com | [www.maprorealestate.com](http://www.maprorealestate.com)  
AMI License 317

These details are guidelines only. They do not form part of any contract and may change at any time without prior notice