

Vilamoura • Algarve

NEW CONTEMPORARY VILLA



Mapro Sociedade Mediação Imobiliária Lda.

Edifício Mapro • Av. Alm. Mendes Cabeçadas • 8135-106 Almancil • Algarve, Portugal

Tel. (+351) 289 390 880 • info@maprorealestate.com

AMI License 317

www.maprorealestate.com

MAPRO
REAL ESTATE • IMOBILIÁRIA

**Knight
Frank**

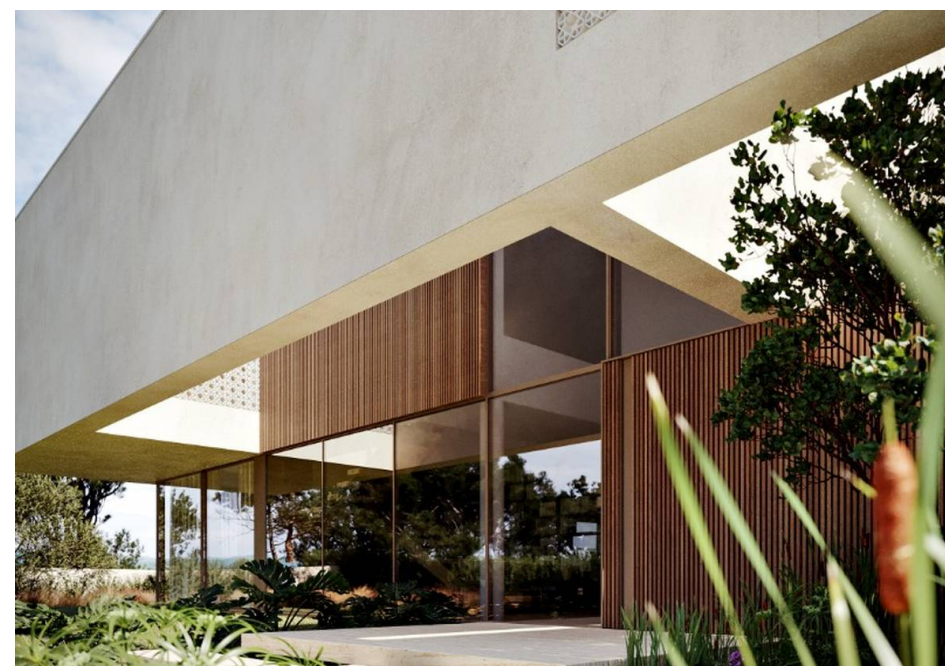


NEW CONTEMPORARY VILLA

This new, contemporary design villa is located in a residential area of the Vilamoura resort, a short distance from the International school, riding stables and Dom Pedro Millenium golf course.

Built with quality materials, the property will include high specifications throughout including a Domotic system, CCTV, under-floor heating throughout and a lift accessing all 4 levels. The ground floor comprises a spacious open plan living with fully fitted and equipped kitchen, a pantry, dining area, lounge, an office, a guest WC and a generously sized guest bedroom looking out onto the back garden. The covered terracing feels like part of the inside of the villa due to the retractable windows, and includes a BBQ and dining area ideal for outdoor living. There is also a heated salt water pool surrounded by plenty of terracing and beautifully manicured gardens. The first floor includes 3 bedroom suites with a shared terrace overlooking the pool and garden.

This floor also provides access to the rooftop where there will be an additional lounging area with firepit. The lower level includes the entertainment areas such as a potential cinema room/games room or gym, a wine cellar, a laundry room, a guest bathroom and 2 bedroom suites. There is also a triple car garage on this level.





€ 3.700.000
PRICE

REF 3440
FACTS & FEATURES


784.2m²


2435m²


6


9



Ownership: Private	Garden Fire Pit, Landscaped
Swimming Pool Jacuzzi, Heated, Salt Water	Garage Triple, Carport
Heating Under-floor (Hydraulic)	Air Conditioning Ducted
Alarm Yes	Extras CCTV, Home Automation System, Video Entry
Features Lift, Gym, Wine Cellar, Cinema Room	Views Garden
Beach 8Km	Golf 3Km
Airport 30Km	



IMPORTANT NOTICE: These details are guidelines only. They do not form part of any contact and may change at any time without prior notice.

