

*Quinta do Lago · Algarve*

# SOUTH FACING WITH GOLF VIEW



**Mapro Sociedade Mediação Imobiliária Lda.**

Edifício Mapro · Av. Alm. Mendes Cabeçadas · 8135-106 Almancil · Algarve, Portugal

Tel. (+351) 289 390 880 · [info@maprorealestate.com](mailto:info@maprorealestate.com)

AMI License 317

[www.maprorealestate.com](http://www.maprorealestate.com)

**MAPRO** | **Knight Frank**  
REAL ESTATE · IMOBILIÁRIA



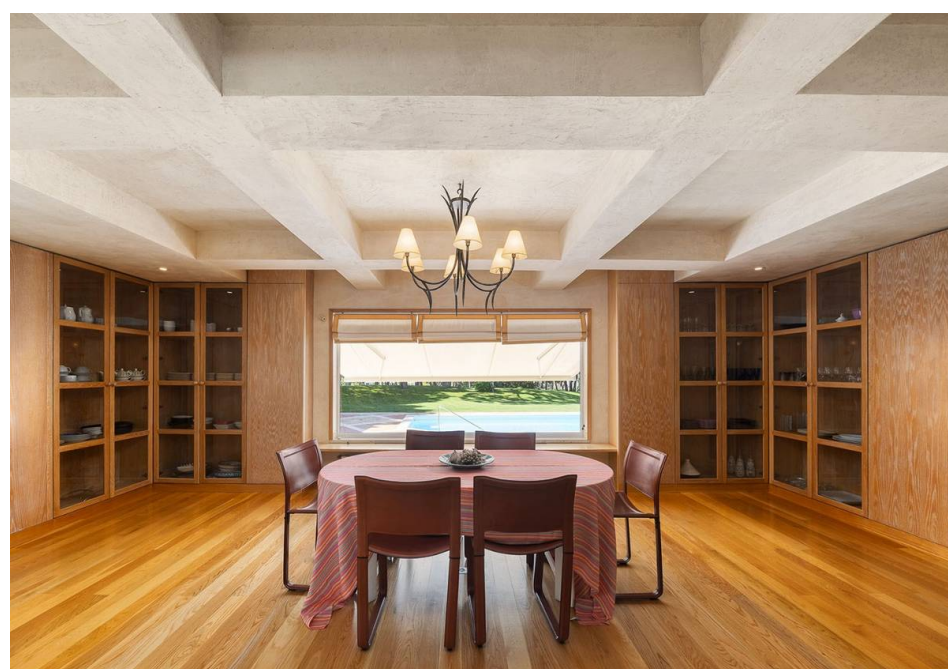


## SOUTH FACING WITH GOLF VIEW

Situated in a mature area, walking distance to the main sporting complex in Quinta do Lago, stands this Moorish style villa, on a double plot, overlooking the golf on the Quinta do Lago South Course.

The villa comprises a large lounge on a split level and separate dining room leading out to the terrace. There is also a library/snug with a pool table and a separate study. Still on the ground floor is the guest WC, a bedroom ensuite with access to the exterior garden area and a fully fitted and equipped kitchen with a Lacanche cooker. Upstairs includes three bedroom suites, including the main suite, which is accessed separately from the ground floor and includes a large ensuite and a dressing area. The bedrooms on the first floor have access to the first floor terrace.

The basement has a multi car garage, a cellar, a large laundry area and a bedroom suite. Off the side of the garage there is also a separate one bedroom apartment. The villa includes a lift to all levels. The gardens are mature and neatly manicured around the pool and terrace. The pool has a cover and the terrace has a beautiful built in BBQ and oven with a covered eating area, all of which is focused on the beautiful romantic outlook to the golf and all its surroundings.







P.O.A.  
PRICE

REF 2940  
FACTS & FEATURES

  
896.49m<sup>2</sup>

  
4.231m<sup>2</sup>

  
7

  
8

  
CLASSE ENERGETICA

Ownership: Company

Garden Landscaped

Borehole Yes

Heating Central Heating,  
Radiators

Alarm Yes

Furnished Negotiable

Features Lift, Bar, Games  
Room, BBQ

Beach Walking Distance

Airport 20Km

Constr. Year 1983

Swimming Pool Covered,  
Yes

Garage Multiple

Air Conditioning (In  
Bedrooms)

Fireplace Wood burner

Extras Domestic Hot Water  
(Boiler), Electric Canopy

Views Golf Course

Golf Walking Distance

IMPORTANT NOTICE: These details are guidelines only. They do not form part of any contact and may change at any time without prior notice.



