

Moncarapacho · Algarve

A SECRET HAVEN IN THE ALGARVE



Mapro Sociedade Mediação Imobiliária Lda.

Edifício Mapro · Av. Alm. Mendes Cabeçadas · 8135-106 Almancil · Algarve, Portugal

Tel. (+351) 289 390 880 · info@maprorealstate.com

AMI License 317

www.maprorealstate.com

MAPRO
REAL ESTATE · IMOBILIÁRIA

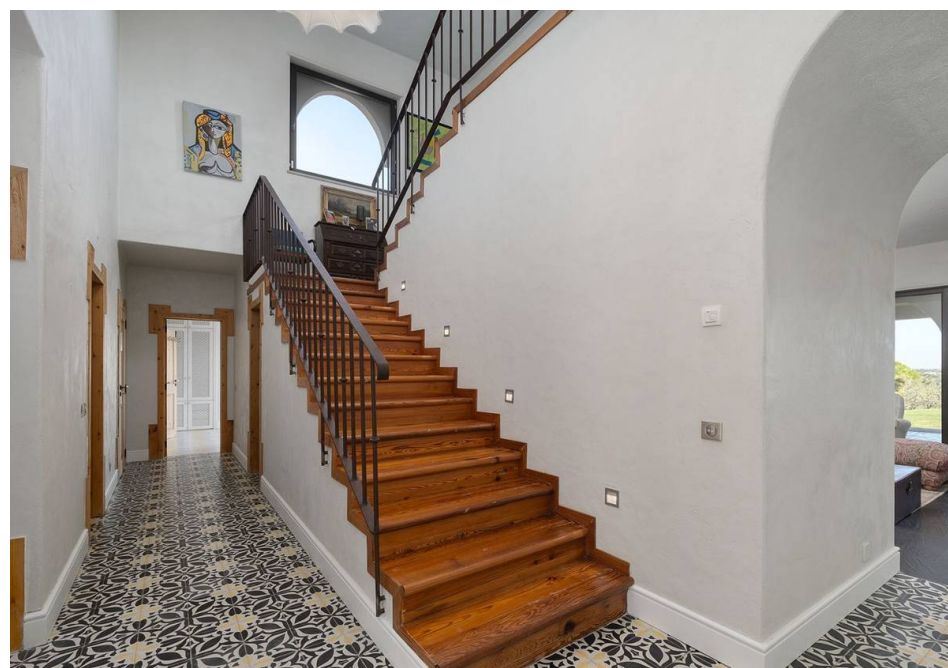
**Knight
Frank**



A SECRET HAVEN IN THE ALGARVE

Situated in the middle of natural paradise embedded right in the Nature Reserve of Ria Formosa is this unique and magnificent family home, inspired by the Moorish architecture of the Iberian peninsula. A personalized home with 6 en suite bedrooms, a manicured garden and a large salt water heated pool open up to panoramic views of the island of Ilha da Armona to the south and mountain Monte Figo to the north.

The main house centered around the entrance courtyard includes 4 bedrooms ensuite a guest WC and open plan fully fitted and equipped kitchen with an island with a dining area and leading onto the library and main living area, all with south facing access to the covered terrace. The outdoor eating area includes well-equipped BBQ area with a large grill & pizza oven overlooking the beautiful landscaped garden with olive gardens and sea ahead. A Boccia/Petanque sand space can be used for different games and brings fun to everybody who loves sports out in the open air. There is also a special wine cellar purpose built.



The villa is very individual and true to its origins using beautiful hydraulic designed tiles with reclaimed vintage wood from old iconic restoration projects. The villa has a 2 bedroom guest house with kitchen, dining and living area. Comfortable, relaxed and sophisticated this exclusive private home is a peaceful retreat close to all facilities with picturesque views across the eastern Algarve Coastline.



P.O.A.
PRICE

REF 389
FACTS & FEATURES


584.11m²


6960m²


6


8



Ownership: Private

Constr. Year 2014

Garden Fruit Trees,
Landscaped

Swimming Pool Exterior
Shower, Heated, Salted

Garage Yes

Heating Under-floor

Air Conditioning Pre-
Installation

Fireplace Wood burner

TV System Satellite

Furnished Not Included

Features Petanque Area

Views Countryside, Sea

Beach 3Km

Golf 22Km

Airport 21Km



IMPORTANT NOTICE: These details are guidelines only. They do not form part of any contact and may change at any time without prior notice.

