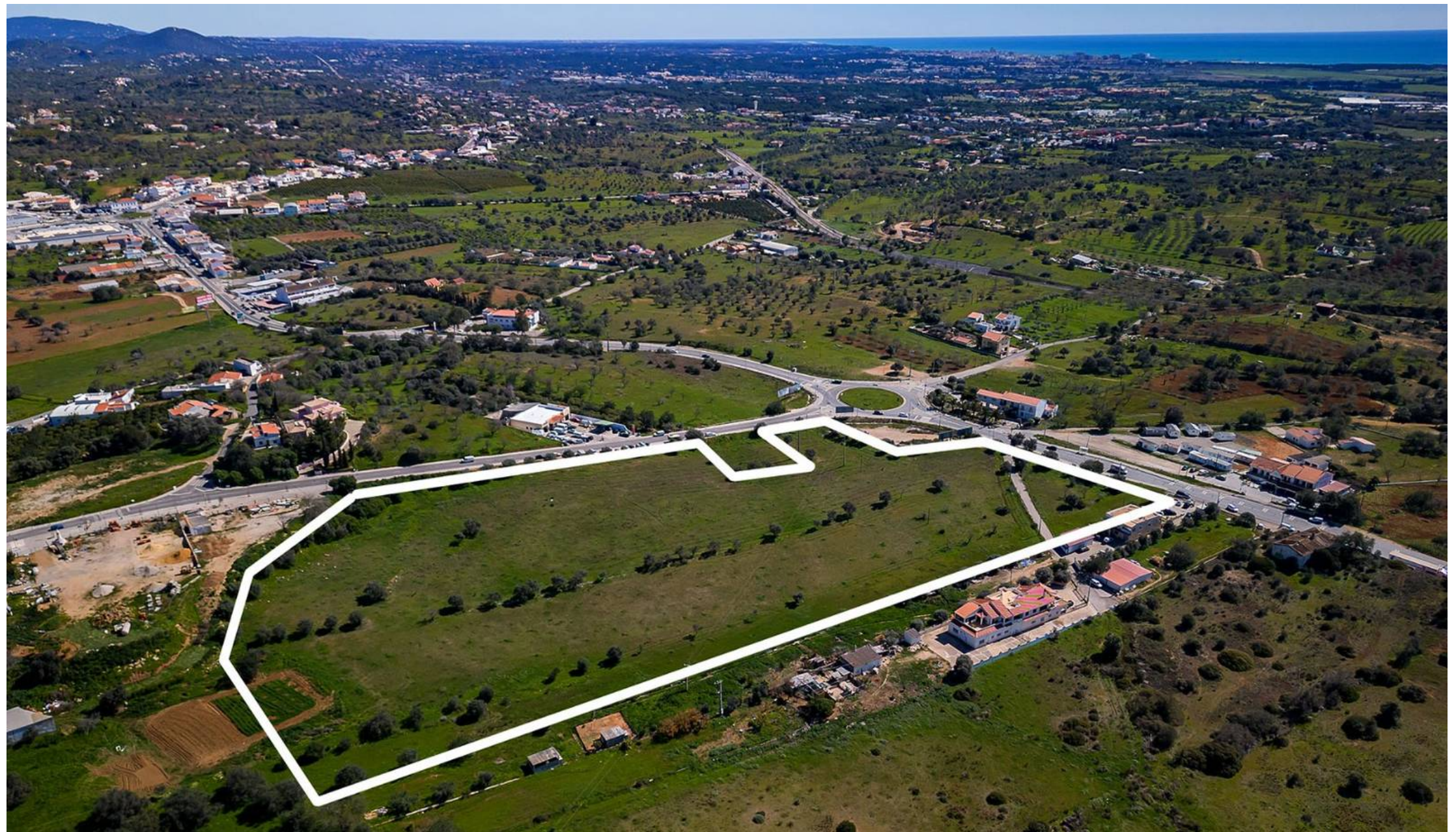


Boliqueime · Algarve

PLOT FOR MODERN DEVELOPMENT



Mapro Sociedade Mediação Imobiliária Lda.

Edifício Mapro · Av. Alm. Mendes Cabeçadas · 8135-106 Almancil · Algarve, Portugal

Tel. (+351) 289 390 880 · info@maprorealestate.com

AMI License 317

www.maprorealestate.com

MAPRO
REAL ESTATE · IMOBILIÁRIA

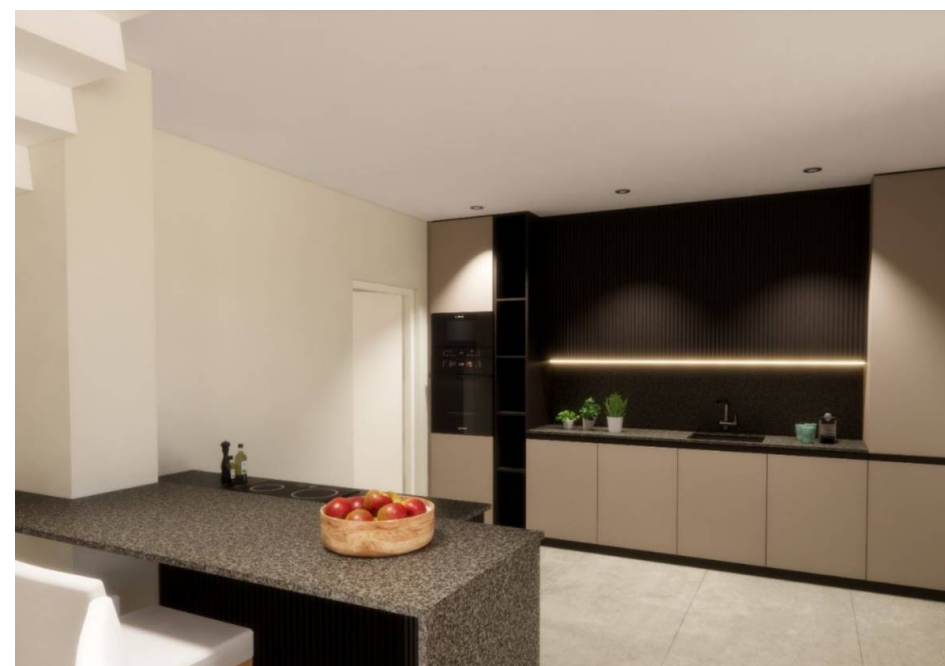




PLOT FOR MODERN DEVELOPMENT

A 29.466m² plot situated in a central yet quiet area within Boliqueime, only a short distance from local amenities such as supermarkets and schools of the area.


This plot has an approved project for the construction of a private and secure development with 22 modern townhouses with pool. The project for these properties include typologies of 2, 3 and 4 bedrooms with different unit sizes available. All properties would provide parking and some further provide a garage. The plot also includes a "green zone" which would be used as a communal area for the development. A great opportunity for a developer.





€ 1.950.000
PRICE

REF 3556
FACTS & FEATURES

			
4786,50m ²	29.466m ²	N/A	N/A

Ownership: Company

Views City

Beach 10Km

Golf 6.5Km

Airport 30Km



IMPORTANT NOTICE: These details are guidelines only. They do not form part of any contact and may change at any time without prior notice.

