

*Santa Bárbara de Nexe · Algarve*

# COUNTRY PLOT WITH APPROVED PROJECT



**Mapro Sociedade Mediação Imobiliária Lda.**

Edifício Mapro · Av. Alm. Mendes Cabeçadas · 8135-106 Almancil · Algarve, Portugal

Tel. (+351) 289 390 880 · [info@maprorealstate.com](mailto:info@maprorealstate.com)

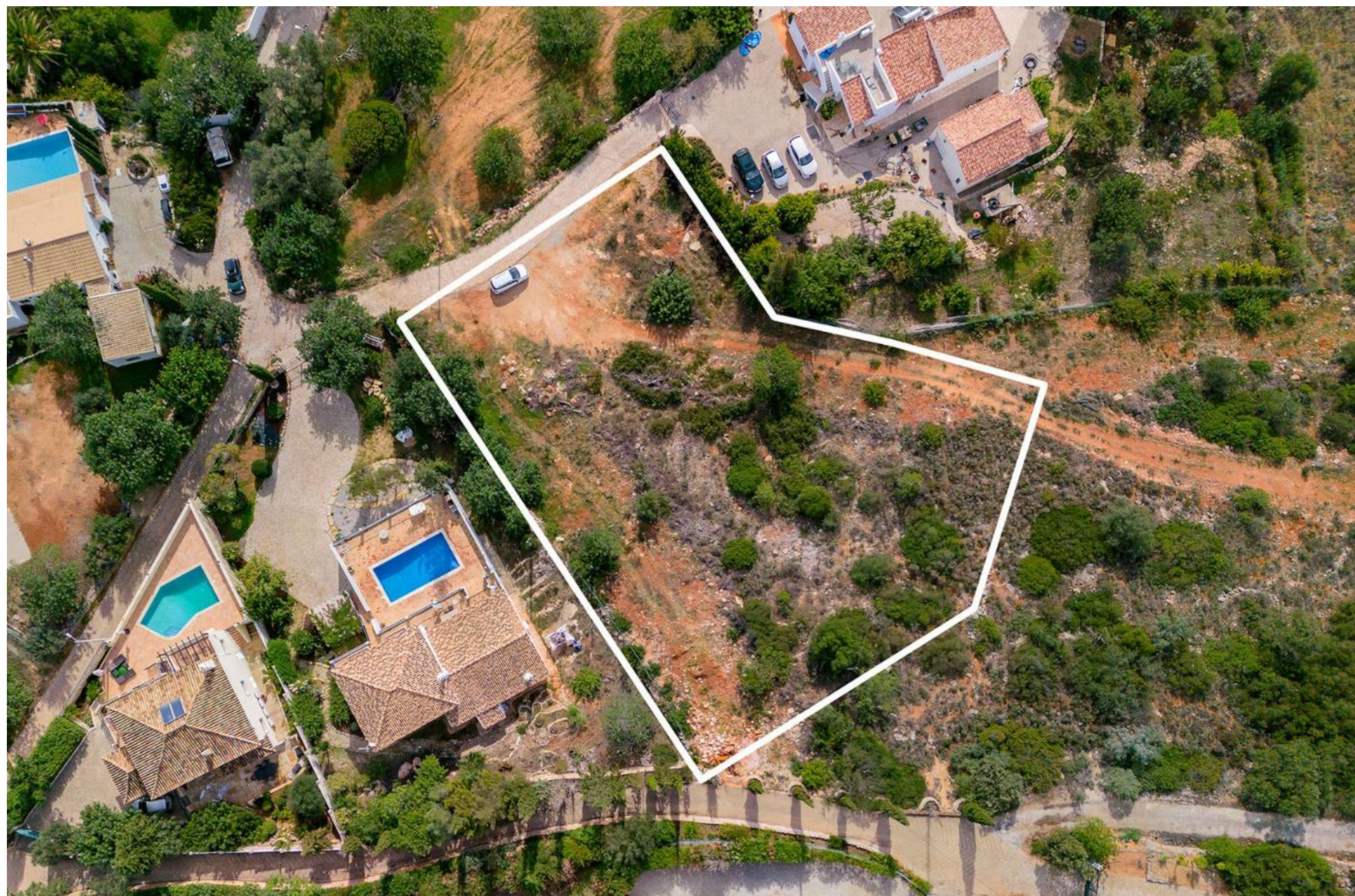
AMI License 317

[www.maprorealstate.com](http://www.maprorealstate.com)

**MAPRO**  
REAL ESTATE · IMOBILIÁRIA

**Knight  
Frank**





## COUNTRY PLOT WITH APPROVED PROJECT

A 14.920m<sup>2</sup> plot situated in the Santa Barbara de Nexe countryside featuring scenic views of the surrounding country and distant sea.

There is an approved project is for an urban part of the plot allowing for the construction of a 5 bedroom villa with a 4900m<sup>2</sup> plot size and 705m<sup>2</sup> build area including basement and a 6 bedroom villa with 10.000m<sup>2</sup> plot size and 900m<sup>2</sup> build area including basement. The properties are set on a spacious and beautifully manicured land with a shared borehole and entrance. The architectural project can still be altered if required.



Santa Bárbara de Nexe is a quaint village offering various amenities such as local shops, supermarkets and restaurants set only a short 15min drive from bustling town Faro.






P.O.A.  
PRICE

REF 2347  
FACTS & FEATURES

  
1605.19m<sup>2</sup>

  
14,920m<sup>2</sup>

  
N/A

  
N/A



Ownership: Private

Garden Project

Swimming Pool Approved

Views Countryside, Sea

Beach 15Km

Golf 12Km

Airport 14Km



IMPORTANT NOTICE: These details are guidelines only. They do not form part of any contact and may change at any time without prior notice.



