

VALE FORMOSO

Ref. 2668

P.O.A.

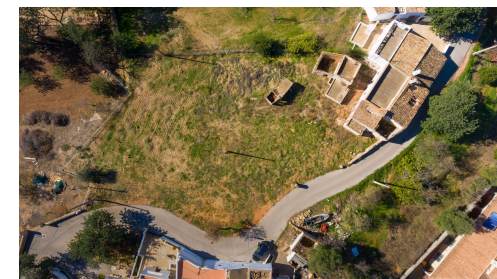


COUNTRY SETTING W/ SEA VIEWS

Situated within a beautiful country setting, this elevated plot of 1.775m² boasts 180° of picturesque sea views. Located within an urban structured area, it is permissible to build 450m² in addition to a basement.

Facts & Features

Plot Size	1775 m ²
Ownership	Private
Landscapes:	Sea
Golf:	3Km
Beach:	4Km
Airport:	13Km



MAPRO

**REAL ESTATE
IMOBILIÁRIA**

+351 289 390 880

info@maprorealestate.com | www.maprorealestate.com

AMI License 317

These details are guidelines only. They do not form part of any contract and may change at any time without prior notice