

*Ombria Resort · Algarve*

# A SECURE RESORT



**Mapro Sociedade Mediação Imobiliária Lda.**

Edifício Mapro · Av. Alm. Mendes Cabeçadas · 8135-106 Almancil · Algarve, Portugal  
Tel. (+351) 289 390 880 · [info@maprorealestate.com](mailto:info@maprorealestate.com)  
AMI License 317  
[www.maprorealestate.com](http://www.maprorealestate.com)

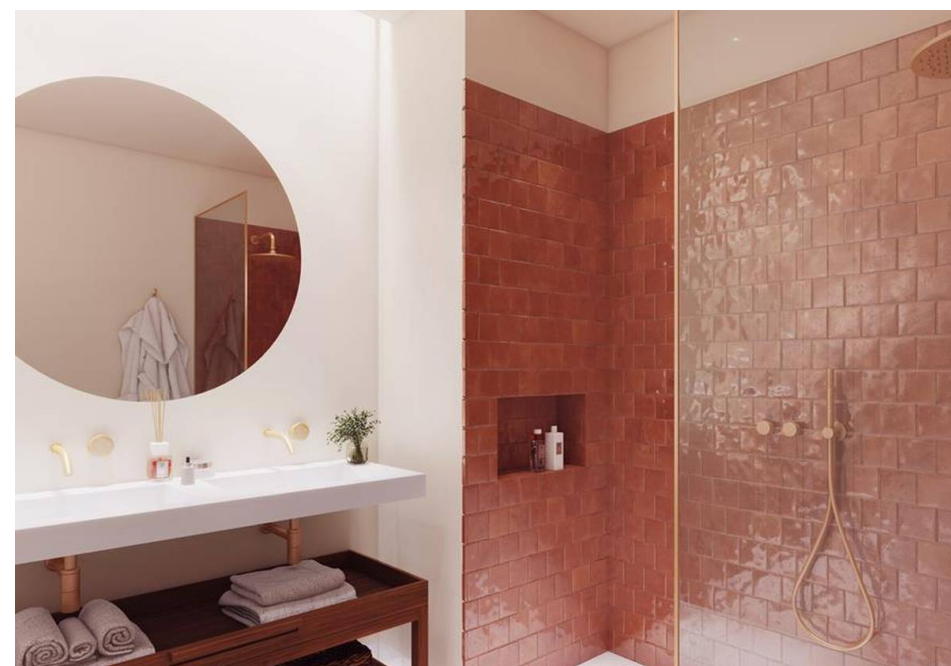






## A SECURE RESORT

Fully furnished, 4 bedroom townhouses with a south or south western orientation situated in the exclusive and secure Oriole Village within the Ombria Resort. On the ground floor, properties comprise an open plan kitchen with custom cabinetry and high-end appliances, a pantry/laundry room, a dining area and a spacious living area accessing the covered terrace and pool garden. Also on this level is a guest WC and a storage room. All 4 bedrooms are on the first floor, 2 of which are en-suite, and feature oak wood flooring and custom wardrobes with integrated lighting. The main bedroom features a walk-in closet and a private terrace with terracotta flooring enjoying views of the golf course or the surrounding natural setting. The property owner accesses 2 indoor parking spaces with electrical charging stations. Oriole Village offers exceptional facilities such as 2 communal pools (of which 1 is heated), a reception building with restaurant/bar, 24/7 security and CCTV. Ombria resort also offers a comprehensive range of services and benefits such as condominium and property management and an optional rental program operated by a market-leading hotel operator such as Viceroy Hotels & Resorts. This investment qualifies for both the Golden Visa program and the Non-habitual Resident tax regime.







P.O.A.  
PRICE

REF 3518  
FACTS & FEATURES



292-  
308m<sup>2</sup>



m<sup>2</sup>



4



4



Ownership: Private

Garden Yes

Garage Parking Facilities

Air Conditioning Geo-  
Thermal

Views Countryside, Golf  
Course

Golf Walking Distance

Constr. Year 2024

Swimming Pool Yes

Heating Under-floor

Furnished Included

Beach 15Km

Airport 22Km

IMPORTANT NOTICE: These details are guidelines only. They do not form part of any contact and may change at any time without prior notice.



