

Vilamoura • Algarve

A RECENTLY BUILT MODERN VILLA



Mapro Sociedade Mediação Imobiliária Lda.

Edifício Mapro • Av. Alm. Mendes Cabeçadas • 8135-106 Almancil • Algarve, Portugal

Tel. (+351) 289 390 880 • info@maprorealestate.com

AMI License 317

www.maprorealestate.com

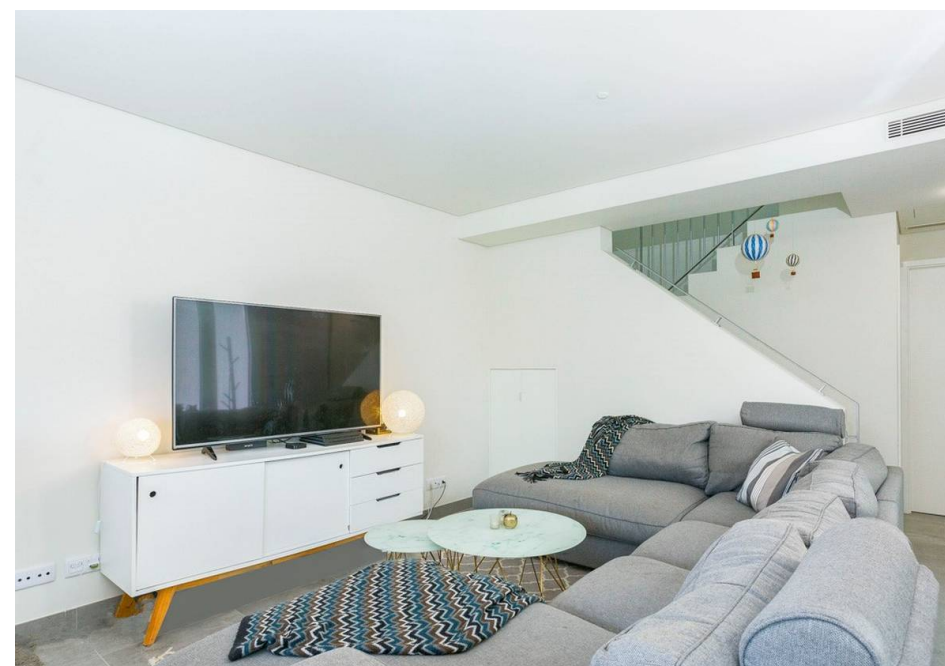
MAPRO | **Knight Frank**
REAL ESTATE • IMOBILIÁRIA



A RECENTLY BUILT MODERN VILLA

This modern design three bedroom villa is located in the prestigious and residential area of Vilamoura within the recently built Uptown development, only a short distance to the award winning Marina, popular restaurants and Falésia beach.

The villa has been constructed using quality materials and features excellent thermal insulation. The property comprises a modern open plan fully fitted and equipped kitchen with a spacious living area accessing the BBQ terrace. There are three bedrooms en-suite with ample built-in wardrobes. One of the bedrooms provides access to a private Jacuzzi with seating area and an electric fireplace, allowing for indulgent moments of relaxation. The main bedroom suite features its own large balcony/terrace, creating a private outdoor space to relax and enjoy the surroundings. There is underground parking for 2 cars and the property benefits from a sauna at the front of the house.



For those who enjoy outdoor activities, property owners have access to a heated communal pool for all year-round enjoyment, beautifully landscaped communal gardens and there is CCTV ensuring safety. It's worth noting that the property still benefits from a 5-year guarantee from a reputable builder, offering peace of mind to the buyer. The villa presents an excellent opportunity to own a luxurious and new home in the highly sought-after Vilamoura resort.



€ 995.000
PRICE

REF 3638
FACTS & FEATURES



245m²



m²



3



4



Ownership: Private

Garden Communal, Terrace

Garage Double

Air Conditioning Split Units

Furnished Negotiable

Features Sauna, BBQ

Golf 2Km

Constr. Year 2021

Swimming Pool Jacuzzi,
Communal

Heating Air Conditioning

Fireplace Electric

Extras Solar Panels

Beach 5Km

Airport 25Km

IMPORTANT NOTICE: These details are guidelines only. They do not form part of any contact and may change at any time without prior notice.

