

*Quinta do Lago · Algarve*

# AN ECCENTRIC LIFESTYLE



**Mapro Sociedade Mediação Imobiliária Lda.**

Edifício Mapro · Av. Alm. Mendes Cabeçadas · 8135-106 Almancil · Algarve, Portugal  
Tel. (+351) 289 390 880 · [info@maprorealestate.com](mailto:info@maprorealestate.com)  
AMI License 317  
[www.maprorealestate.com](http://www.maprorealestate.com)

**MAPRO** | **Knight Frank**  
REAL ESTATE · IMOBILIÁRIA



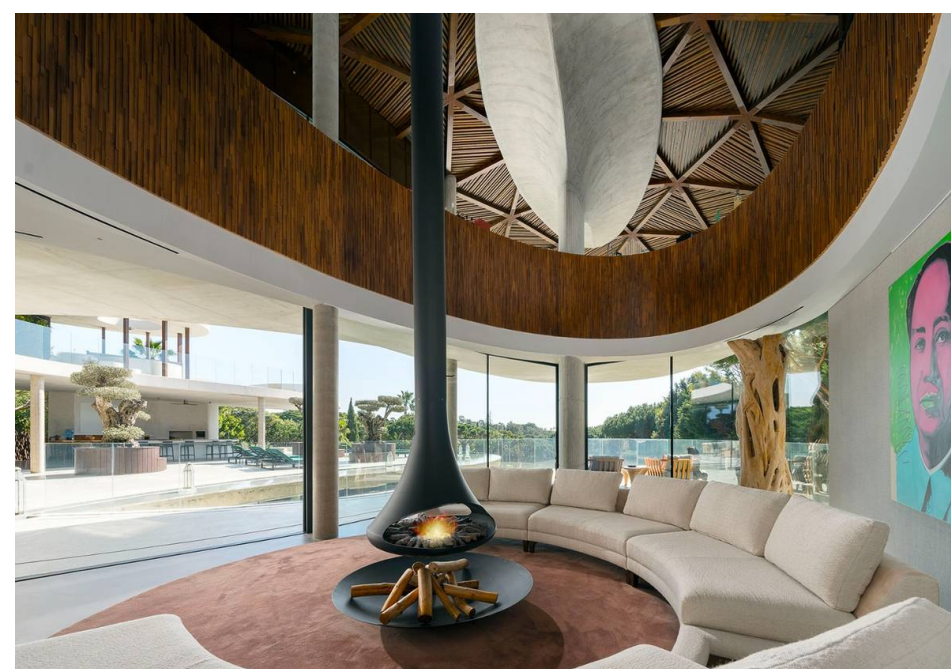
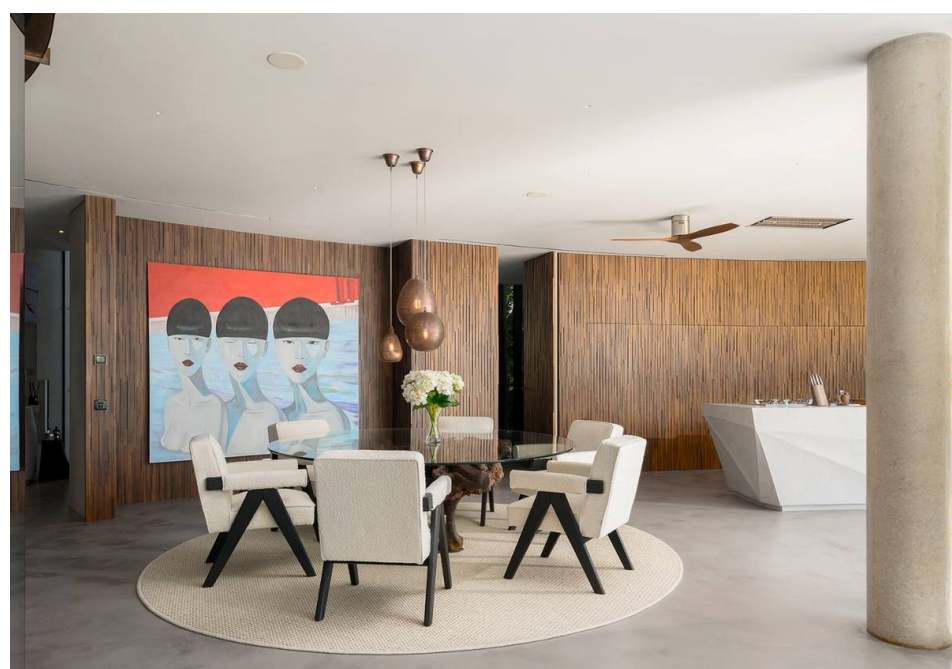


## AN ECCENTRIC LIFESTYLE

This iconic masterpiece, is situated in an exclusive area within Quinta do Lago. The grand double height main entrance door, surrounded by the lush vertical garden on the sweeping staircase and the soft sound of the cascading water as you walk in, sets the tone for this inspiring home. The indoor-outdoor living is emphasized by lowering the mechanical glass doors into the floor. The living area includes an open plan lounge with a suspended fireplace, a kitchen equipped with SMEG appliances, a butlers kitchen and dining area all accessing the exterior terrace. There is also a cosy snug and WC.

The exterior covered terrace provides a further cooking station including a BBQ and bar. The star lite swimming pool has a sunken bar, with picturesque views towards the beach. There are two bedroom suites on this floor. More than half of the first floor is completely dedicated to the magnificent main bedroom suite. The sleeping area includes a walk in wardrobe; en-suite bathroom with tropical exterior shower, jacuzzi and fire-pit with seating area to admire the pictures sea views. On the other side of the suite is the office, lounge area with a luxury kitchenette and bar. This floor also includes two further bedroom suites. The roof terrace includes prep/bar area, jacuzzi (pre-installation) and fire-pit, all boasting gorgeous sea views.

The lower level includes the 6th bedroom suite, a games area with a bar, a cinema room and an interesting wine room with sand flooring. There is also an indoor pool, a hydro-massage VICHY table, a WC, a sauna, a Turkish bath and the laundry room. The double garage features a turn table. The property is completely private with a plot size of 2.906m2 and additional adopted land, fully landscaped.







P.O.A.  
PRICE

REF 1768  
FACTS & FEATURES

  
1500m<sup>2</sup>

  
5600m<sup>2</sup>

  
6

  
8



Ownership: Company

Garden Landscaped

Garage Turntable, Double

Air Conditioning Ducted

Fireplace Gas, Bioethanol

Extras Surround Sound,  
Electric Gate

Views Sea

Golf Walking Distance

Constr. Year 2019

Swimming Pool Resort  
Style, Indoor, Jacuzzi

Heating Under-floor

Alarm Yes

Furnished Negotiable

Features Lift, Sauna, Turkish  
Bath, Cinema Room, Bar,  
Games Room, BBQ, Roof  
Terrace

Beach 3Km

Airport 20Km

IMPORTANT NOTICE: These details are guidelines only. They do not form part of any contact and may change at any time without prior notice.



